

Installation Guide

WARNING

PLEASE FIND A QUALIFIED ELECTRICIAN FOR INSTALLATION.  
Please Read The Instructions Before Installation And Use.

To reduce the risk of death, personal injury, or property damage from fire, electric shock, falling parts, cut/abrasions, and other hazards, read all warnings and instructions included with and the fixture box and fixture labels.

Before installing, servicing, or performing routine maintenance upon this equipment, follow these general precautions. Commercial installation, service, and maintenance of luminaires should be performed by a qualified licensed electrician.

If you are unsure about the installation or maintenance of the luminaires, consult a qualified licensed electrician. Please abide by all relevant country, regional, and local code requirements and regulations when installing this luminaire. Wiring must be in accordance with NEC and all applicable local codes.

DO NOT INSTALL DAMAGED PRODUCT! This luminaire has been properly packed so that no parts should have been damaged during transit. Inspect to confirm. Any part damaged or broken during or after assembly should be replaced.

Do not make or alter any holes unnecessarily in an enclosure of wiring or electrical components during the installation.

Turn off electrical power at the fuse or circuit breaker box before wiring fixture to the building power.

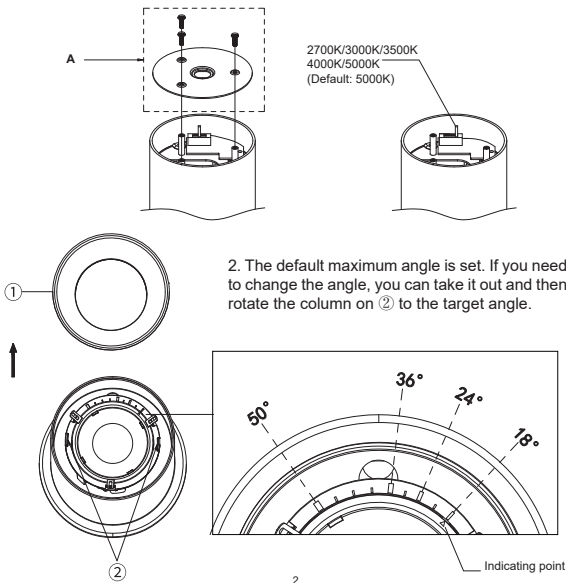
Verify that supply voltage is correct by comparing it with the luminaire label information. Do not install with supply voltage that exceeds the rated input voltage of the luminaire.

Caution

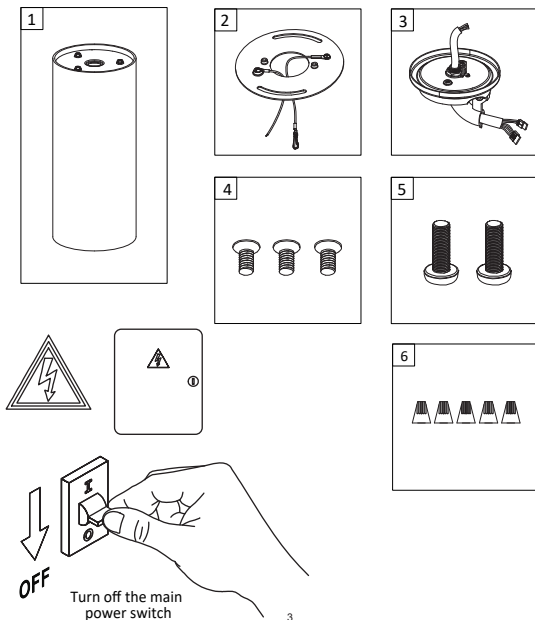
- Do not install in wet locations. For dry and damp use only.
- Disconnect or turn off power before installation or servicing.
- The electrical rating of this product is 120-277V. Installer must confirm that there is 120-277V at the fixture before installation.

CCT/Beam Angle Selectable

1. Remove the top A of the fixture and select the desired CCT as needed.

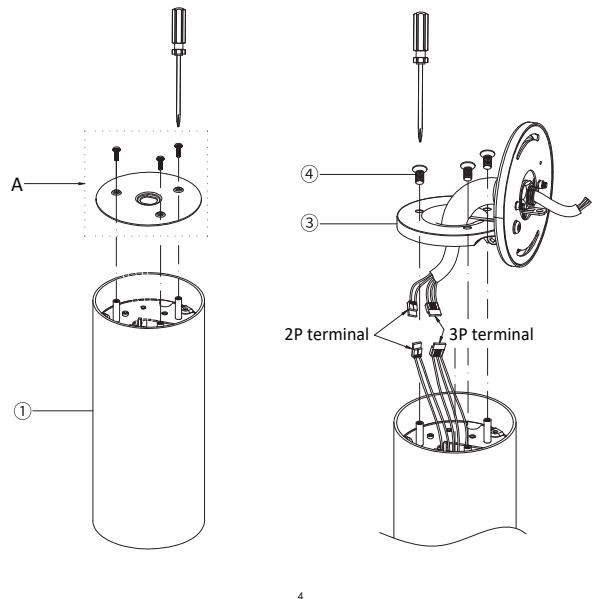


Angle Adjustable Version

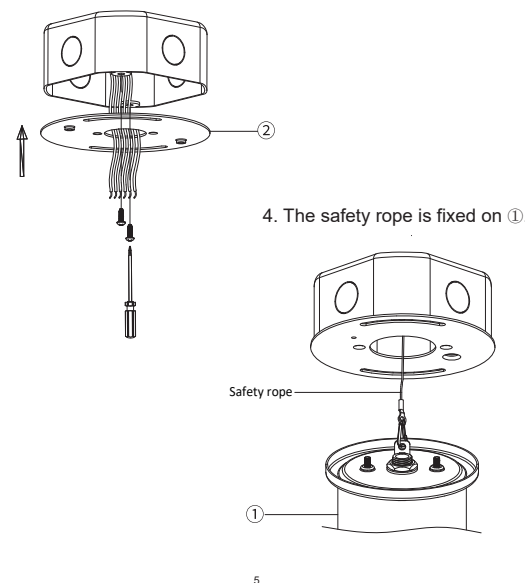


1. Remove the "A" part of ① and set it aside

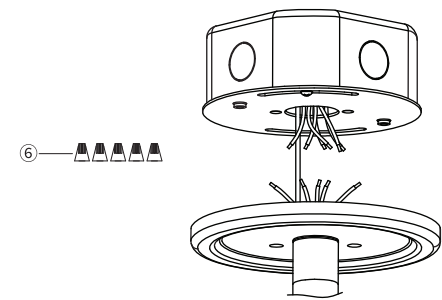
2. Plug the two 2P terminals and the two 3P terminals into each other respectively; then tighten ③ with ④.



3. Use the 8-32 screws that come with the junction box to fix ② to the junction box.



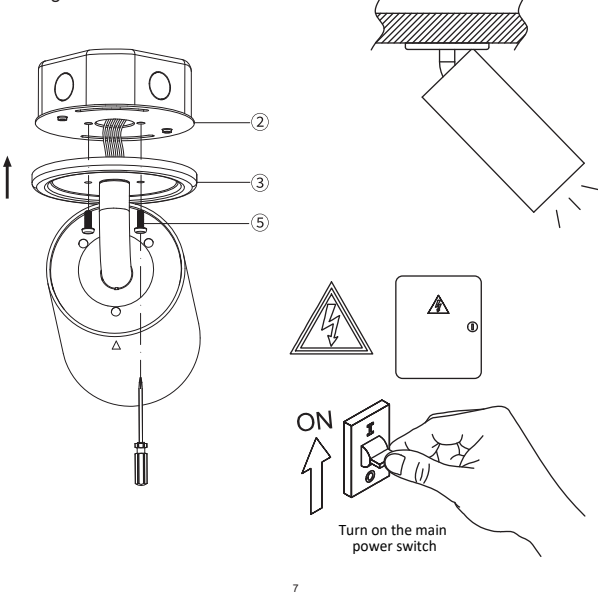
5. Wiring.



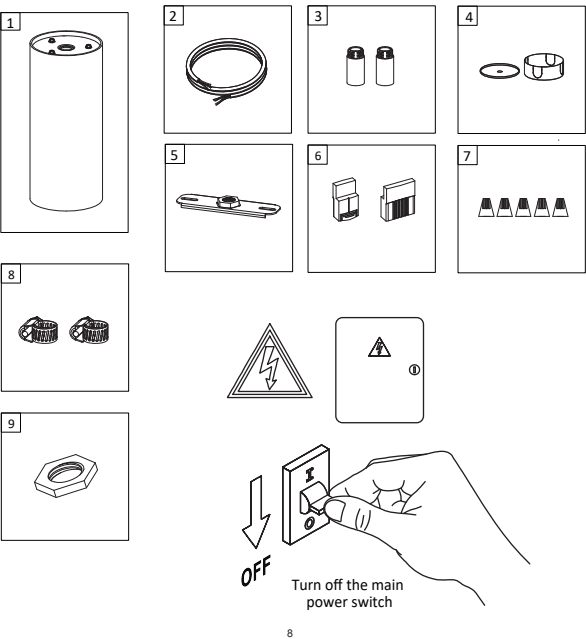
WIRING DIAGRAM

LINE	●	BLACK
NEUTRAL	●	WHITE
GROUND	●	GROUND
DIM (+)	●	VIOLET
DIM (-)	●	PINK

6. Put the wires and terminal caps into the junction box, and finally connect the holes ③ to ② and tighten them with ⑤.

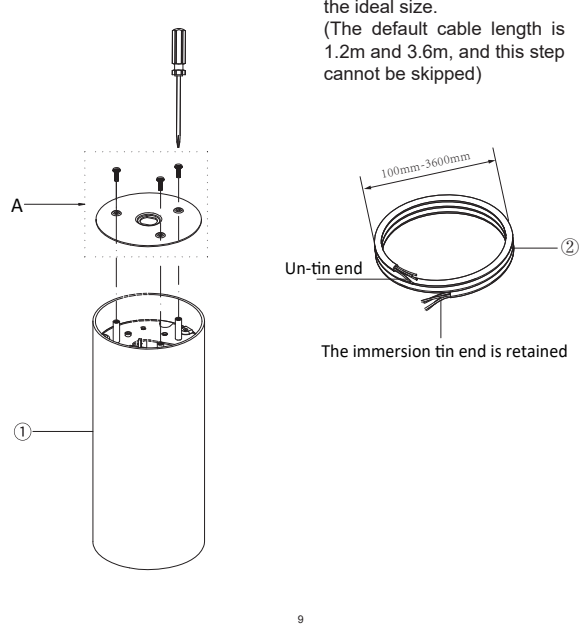


Hanging Wire Version

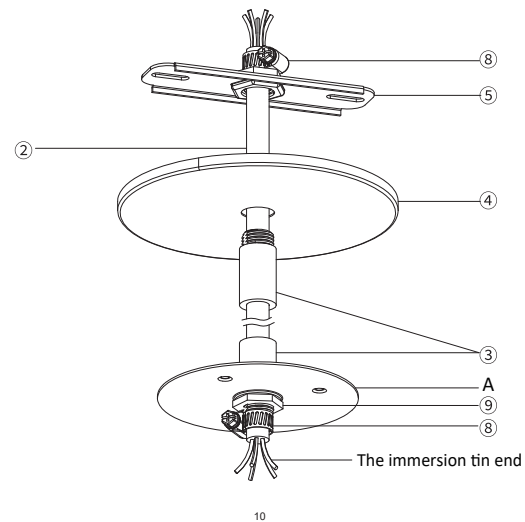


1. Remove the "A" part of ①.

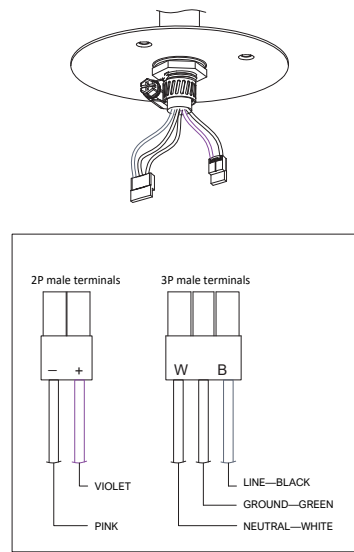
2. Cut the untinned end to the ideal size. (The default cable length is 1.2m and 3.6m, and this step cannot be skipped)



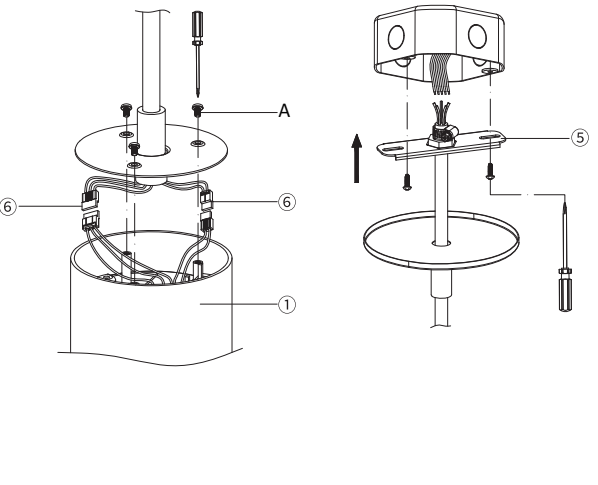
3. a: Insert ③, A, ⑨, and ⑧ into the tin-immersed end of ② in sequence and tighten;  
b: Insert ③, ④, ⑤, and ⑥ into the non-tin-immersed end of ② in sequence.



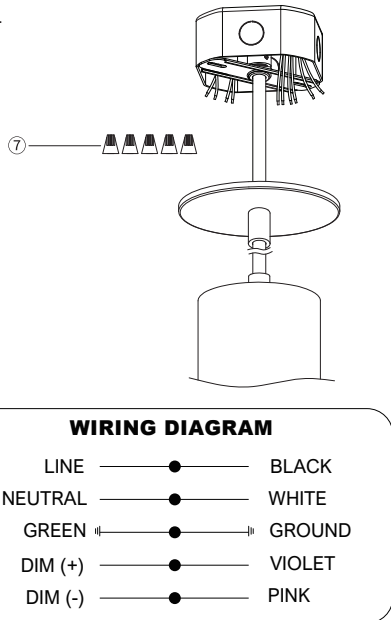
4. As shown in the figure, align the tinned wire ② and the male terminals 2P and 3P.



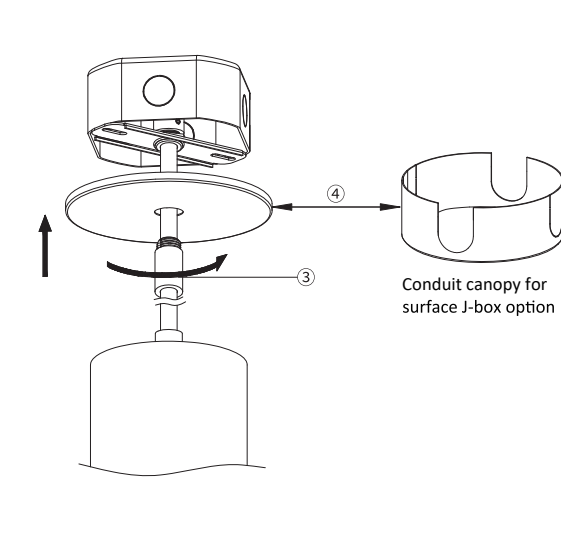
5. a: Plug the 2P terminals and 3P terminals of ① and ② together; b: Tighten the M3 screws of part "A" and ①.



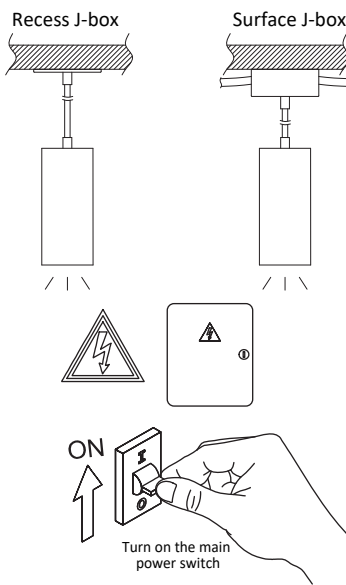
7. Wiring.



8. Put the wires and terminal caps into the junction box; push them upwards with ④ and tighten them with ③.



9. Installation is complete, power on and light up.



## Stem Version

