



Your experience matters.

INSTALLATION MANUAL

SSD Suspending Semi-Direct Linear fixture

IMPORTANT SAFETY INSTRUCTION

Read this installation guide prior to attempting installation. Always turn OFF the main power before starting your installation. Consult a qualified electrician before installation. Installation should be carried out by a qualified electrician.

During installation, basic safety precautions should always be followed, including the following listed.

1. Do not install the lighting system in a wet location.
2. Ensure the appropriate connectors match the luminaire fixture
3. Do not install any part of the luminaire less than 5 feet above the floor.
4. Do not install any luminaire assembly closer than 5 inches from any window treatments, i.e., curtain, blinds or any similar combustible type material.
5. Do not attempt to energize anything other than the luminaire fixtures.
6. To reduce the risk of fire and electric shock, do not attempt to connect to power tools, extension cords, appliances, or the like, to the track.
7. Maintenance of the luminaires should be performed by person(s) familiar with the luminaires construction and any hazards involved. regular fixture maintenance programs are recommended.
8. Do not exceed the nominal supply voltage or amperage ratings.
9. Turn the power OFF at the fuse or circuit breaker box before doing any installation or maintenance activities.
10. Wear rubber soled shoes and work on a sturdy wooden or non-conductive ladder.
11. The lighting product must be mounted in locations and at heights in compliance with the National Electrical Code and with local building codes. Installing contrary to instruction may cause unsafe conditions.
12. To avoid hazards to children, take accountability for all parts and dispose all packing materials properly.

13. It may be necessary to clean the refractor / lens. Frequency of cleaning will depend on ambient dirt level and minimum light output which is acceptable to the user. Refractor / lens should be washed in a solution of warm water and any mild, non-abrasive household detergent, rinsed with clean water and wiped dry. Should optical assembly become dirty on the inside, wipe refractor / lens and clean in above manner, replacing damaged gaskets as necessary.
14. Call the Technical Support department about any installation questions.
15. Do not install a damaged product. This luminaire has been properly packed so that no parts should have been damaged during transit. Inspect to confirm. Any part damaged or broken during or after assembly should be replaced.
16. These instructions do no purpose to cover all details or variations in equipment nor to provide every possible contingency to meet in connection with installation, operation or maintenance. Should further information be desired or particular problems arise, not covered sufficiently for the purchaser's or owner's purposes, please contact the Technical Team.



CAUTION

This equipment is intended to be installed only by qualified personnel. The installation must be made in accordance with the current edition of the National Electrical Code (NEC) and all applicable state and local building codes. The final installation must be approved by the appropriate, qualified electrical / building inspector(s). Improper installation may result in a fire or electrical hazard. Ensure the electrical power to the circuit has been disconnected before installing the electrical system



WARNING

- Risk of fire. Most dwellings built before 1985 have supply wire rated at 60°C.
- Consult a qualified electrician before installation.
- Properly ground electrical enclosure.
- To prevent wiring damage or abrasion, do not expose wiring to edges of sheet metal or other sharp objects.
- Use only UL approved wire input/output connections. Minimum size 18 AWG or 14AWG if there are any continuous runs.
- If the fixtures are connected in a continuous run, do not exceed allowable number of fixtures in series/power in continuous runs.
- Inrush currents must be taken in account by the electricians to account for proper circuit design.



SLG
LIGHTING

11325 Cash Road
Suite 100
Stafford, TX 77477
www.slgus.com

Subscribe to our YouTube channel for installation videos, contest, giveaways, and more. www.YouTube.com/@SLGLighting



@SLGUS



@SLG_US

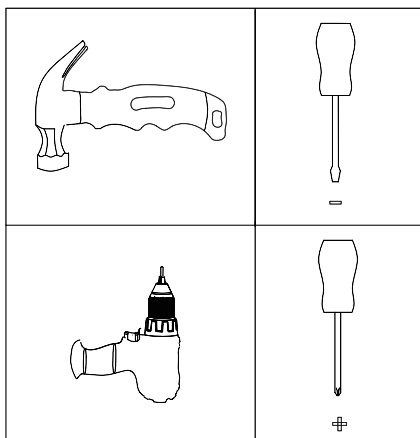


@SLG_US

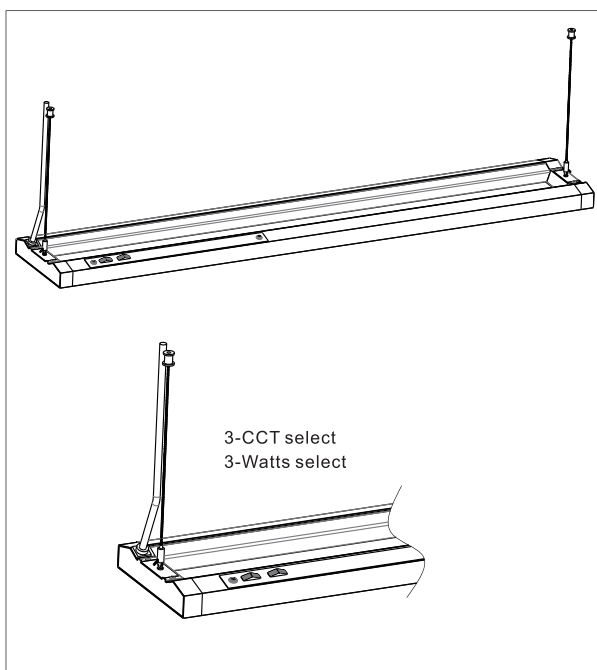


SLG Lighting

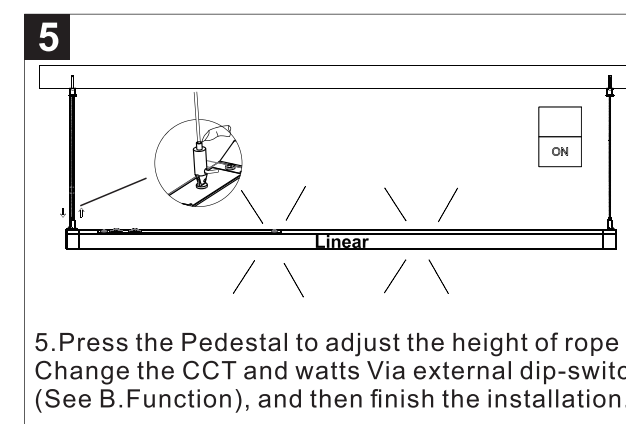
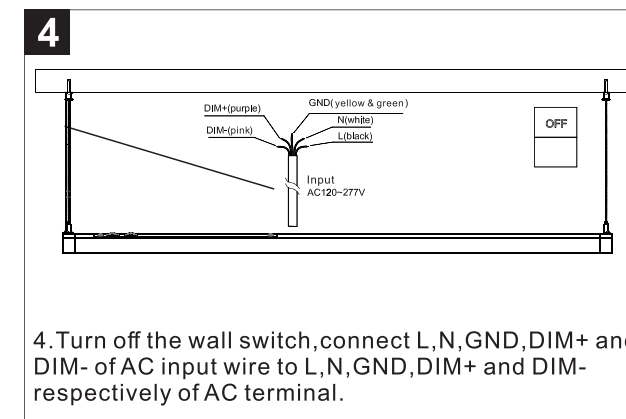
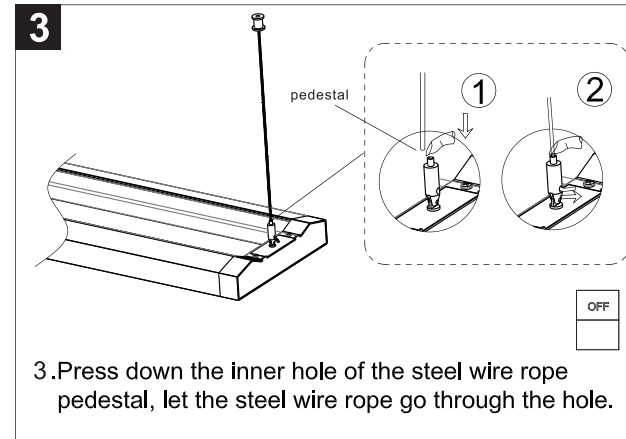
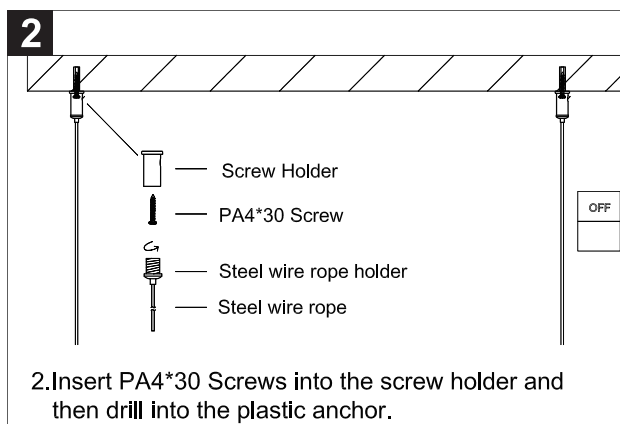
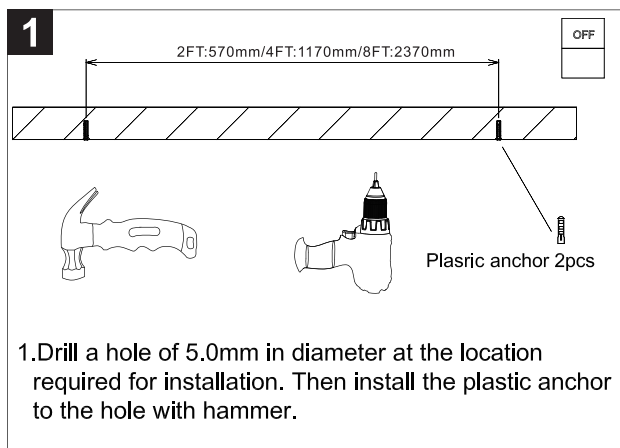
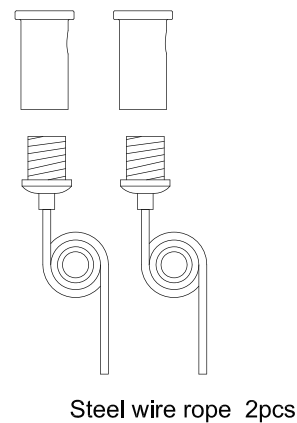
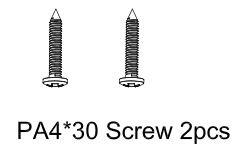
TOOL



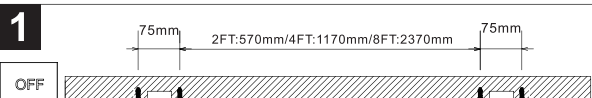
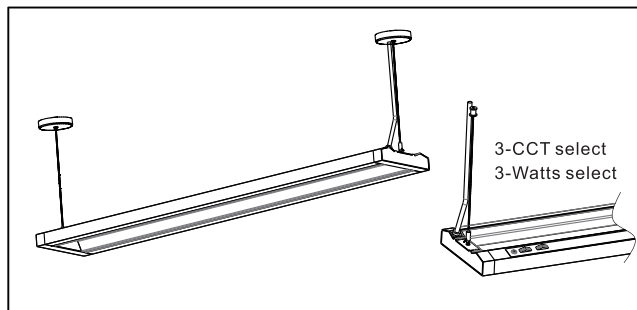
A1) .Rope Suspension Installation



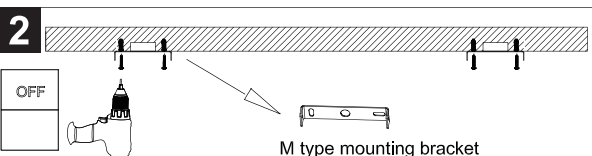
Installation Kits



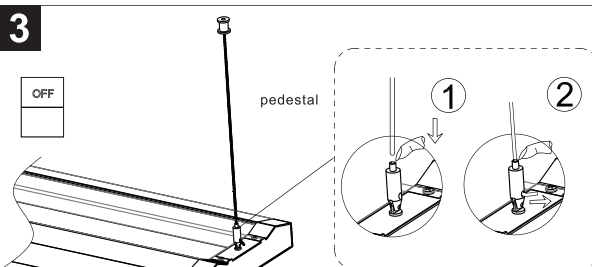
A2) .Canopy Suspension Installation



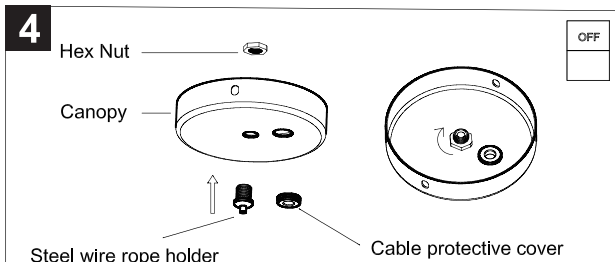
1. Drill a hole of 5.0mm in diameter as shown in the figure at the location required for installation. Then hammer the plastic anchor into the hole.



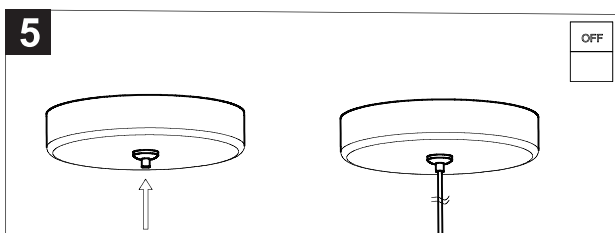
2. Insert PA4*30 screws into the M type mounting bracket and then drill into the plastic anchor.



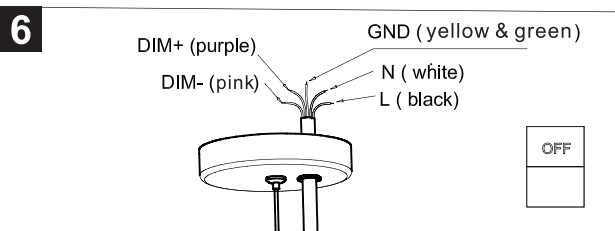
3. Press down the inner hole of the steel wire rope pedestal, let the steel wire rope go through the hole.



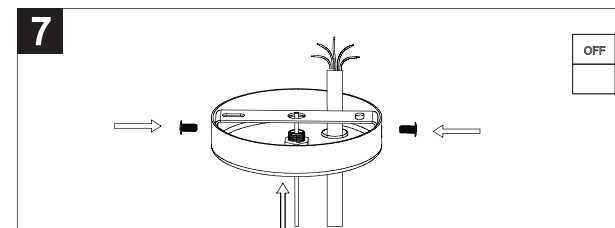
4. Insert the steel wire rope holder into the middle hole of the canopy and tighten the steel wire rope holder with hex nut; Clip the cable protective cover into the AC line hole of the canopy.



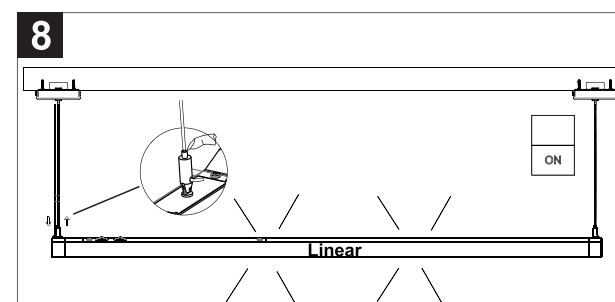
5. Press the steel wire rope holder as shown in the figure, and then insert the stainless steel wire into the inner hole of the steel wire rope holder; The mounting height of the lamp could be adjusted by this steel wire rope holder.



6. Insert the AC input cable through the cable protective cover and connect it with the AC line by the corresponding connection wire with L, N, GND.



7. Adjust the length of the AC input cable, align the side hole of the canopy and the M mounting bracket as shown in the figure, then tighten the screw.



8. Press the Pedestal to adjust the height of rope, Change the CCT and watts Via external dip-switch (See B.Function), and then finish the installation.

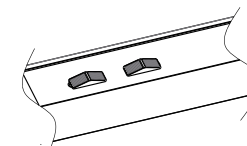
B. Function

3-Watts select

Pattern	2FT	4FT	8FT
Low Lumen	15W	30W	60W
Medium Lumen	20W	40W	80W
High Lumen	25W	50W	100W

3-CCT select

Change CCT	A	A+B	B
------------	---	-----	---



Note: Synchronously set the DIP switches at both ends for 8ft model.

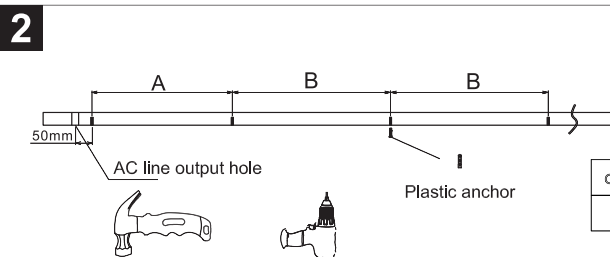
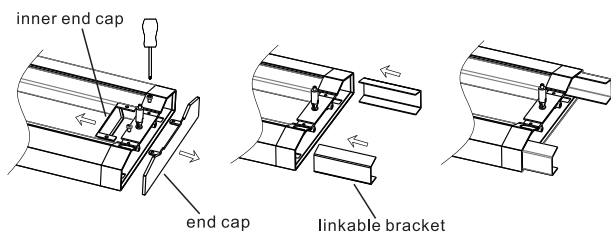
C. Linkable Installation

Note: Only available for Linkable Products.

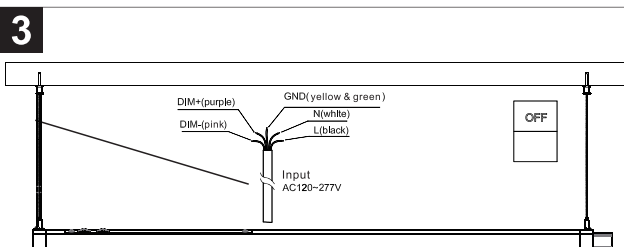
- 1** ① Remove one end cap, insert the linkable bracket into the linear1, connect with buckle inside the linear1, take out the inside linkable wire.



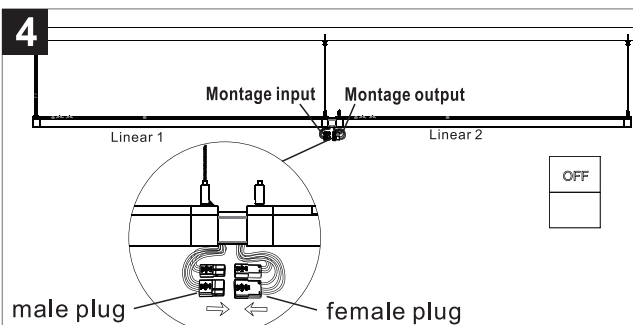
Montage please open Linear1 Montage input and Linear2 Montage output



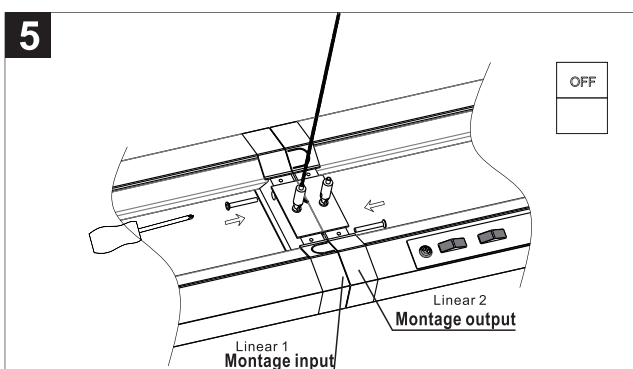
- ② Measure the ceiling, make down the position for lineae1, install the first Linear Light to the ceiling as instruction of A Rope Suspension Installation.



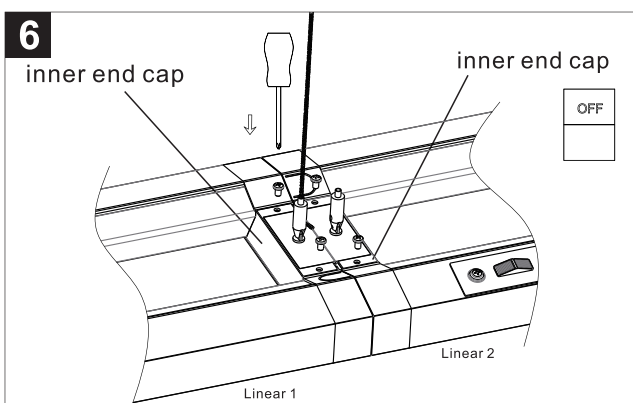
- ③ Install Linear 1, then connect AC line.



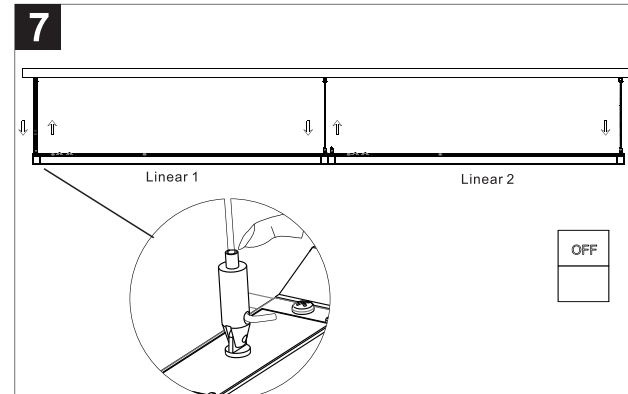
- ④ Connect the male plug of Linear 1 and female plug of Linear 2, insert the linkable bracket to the Linear 2 make them seamless linkable together.



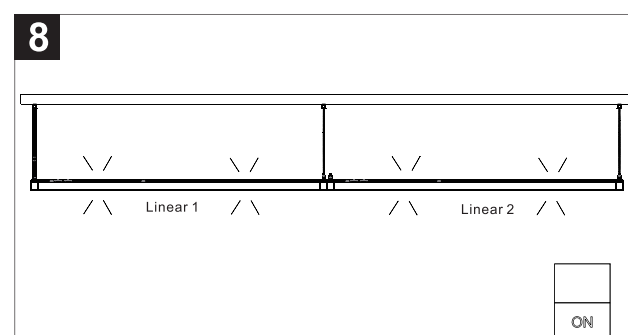
- ⑤ Check the status after linked make sure no any gap between two linears, and fix with screws.



- ⑥ Install the inner end cap and fix with screws.



- ⑦ Press the pedestal to adjust the height of rope.



- ⑧ Change the CCT and watts Via external dip-switch (See B . Function), and then finish the installation.

NOTE:
LED LINEAR CAN BE GAPLESS LINKABLE TOGETHER AS NEEDED,
(if you order to use 18# cord, More links can be Customized.)

Max.linkable Quantity (Unit:PC)
Linkable fixtures Qty need to meet the below two conditions:
1) $N \leq 7$ pcs
2) Input voltage = 120V, $N \cdot P \leq 420W$
Input voltage = 277V, $N \cdot P \leq 960W$
Input voltage = 347V, $N \cdot P \leq 1200W$
Note: N=Qty of linkable fixtures,
P =Wattage per fixture