



Your experience matters.

## INSTALLATION MANUAL

### SWL Slim Wallmount Linear Fixture

#### IMPORTANT SAFETY INSTRUCTION

Read this installation guide prior to attempting installation. Always turn OFF the main power before starting your installation. Consult a qualified electrician before installation. Installation should be carried out by a qualified electrician.

During installation, basic safety precautions should always be followed, including the following listed.

1. Do not install the lighting system in a wet location.
2. Ensure the appropriate connectors match the luminaire fixture
3. Do not install any part of the luminaire less than 5 feet above the floor.
4. Do not install any luminaire assembly closer than 5 inches from any window treatments, i.e., curtain, blinds or any similar combustible type material.
5. Do not attempt to energize anything other than the luminaire fixtures.
6. To reduce the risk of fire and electric shock, do not attempt to connect to power tools, extension cords, appliances, or the like, to the track.
7. Maintenance of the luminaires should be performed by person(s) familiar with the luminaires construction and any hazards involved. regular fixture maintenance programs are recommended.
8. Do not exceed the nominal supply voltage or amperage ratings.
9. Turn the power OFF at the fuse or circuit breaker box before doing any installation or maintenance activities.
10. Wear rubber soled shoes and work on a sturdy wooden or non-conductive ladder.
11. The lighting product must be mounted in locations and at heights in compliance with the National Electrical Code and with local building codes. Installing contrary to instruction may cause unsafe conditions.
12. To avoid hazards to children, take accountability for all parts and dispose all packing materials properly.

13. It may be necessary to clean the refractor / lens. Frequency of cleaning will depend on ambient dirt level and minimum light output which is acceptable to the user. Refractor / lens should be washed in a solution of warm water and any mild, non-abrasive household detergent, rinsed with clean water and wiped dry. Should optical assembly become dirty on the inside, wipe refractor / lens and clean in above manner, replacing damaged gaskets as necessary.
14. Call the Technical Support department about any installation questions.
15. Do not install a damaged product. This luminaire has been properly packed so that no parts should have been damaged during transit. Inspect to confirm. Any part damaged or broken during or after assembly should be replaced.
16. These instructions do no purpose to cover all details or variations in equipment nor to provide every possible contingency to meet in connection with installation, operation or maintenance. Should further information be desired or particular problems arise, not covered sufficiently for the purchaser's or owner's purposes, please contact the Technical Team.



## CAUTION

This equipment is intended to be installed only by qualified personnel. The installation must be made in accordance with the current edition of the National Electrical Code (NEC) and all applicable state and local building codes. The final installation must be approved by the appropriate, qualified electrical / building inspector(s). Improper installation may result in a fire or electrical hazard. Ensure the electrical power to the circuit has been disconnected before installing the electrical system



## WARNING

- Risk of fire. Most dwellings built before 1985 have supply wire rated at 60°C.
- Consult a qualified electrician before installation.
- Properly ground electrical enclosure.
- To prevent wiring damage or abrasion, do not expose wiring to edges of sheet metal or other sharp objects.
- Use only UL approved wire input/output connections. Minimum size 18 AWG or 14AWG if there are any continuous runs.
- If the fixtures are connected in a continuous run, do not exceed allowable number of fixtures in series/power in continuous runs.
- Inrush currents must be taken in account by the electricians to account for proper circuit design.



**SLG**  
LIGHTING

11325 Cash Road  
Suite 100  
Stafford, TX 77477  
[www.slgus.com](http://www.slgus.com)

Subscribe to our YouTube channel for installation videos, contest, giveaways, and more. [www.YouTube.com/@SLGLighting](http://www.YouTube.com/@SLGLighting)



@SLGUS



@SLG\_US

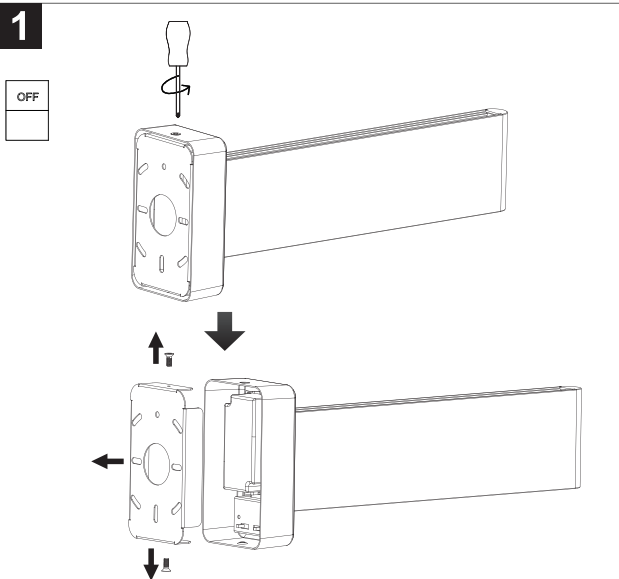
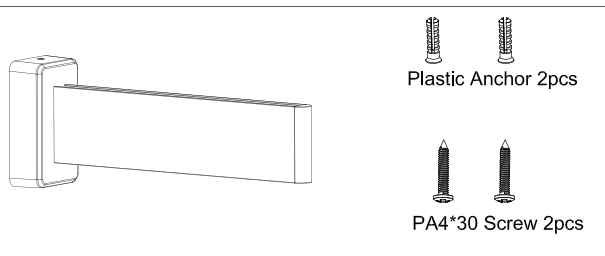
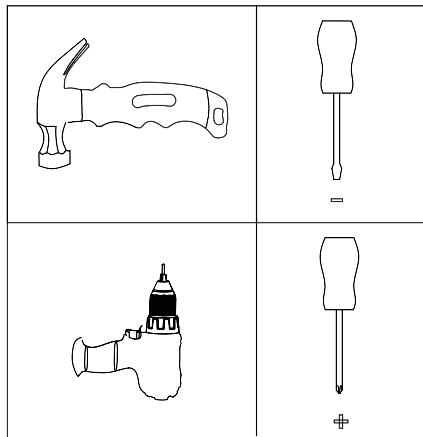


@SLG\_US



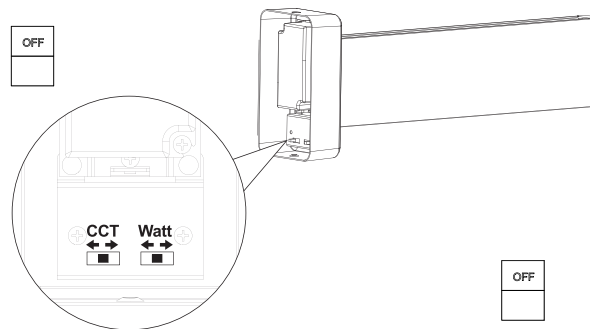
SLG Lighting

## TOOL



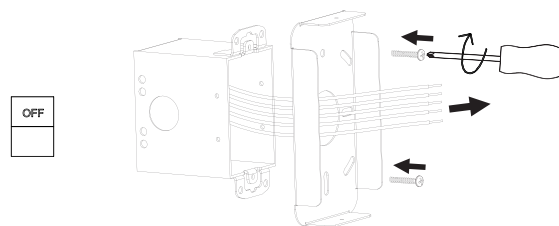
1. Unscrew the screws and open the fixing plate.

2



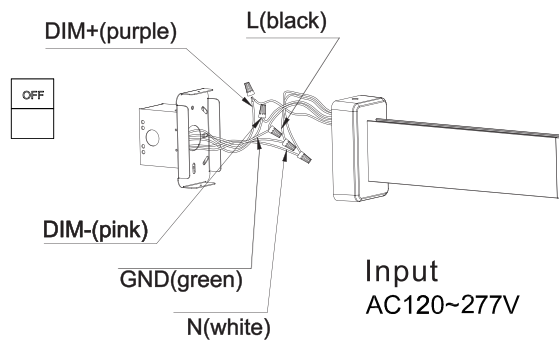
2. Dial the code to adjust the corresponding power and color temperature.

3



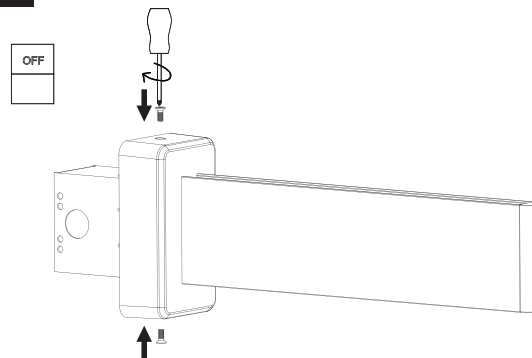
3. Pull out the wire and fix the fixing plate with screws.

4



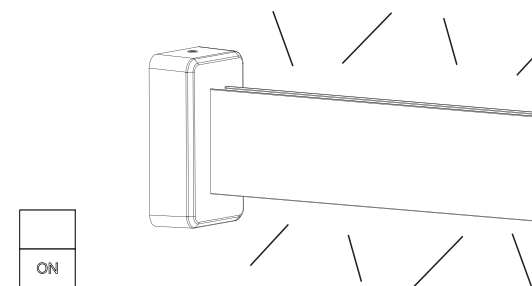
4. Connect the input line.

5



5. Fix the lamp body to the fixing plate with screws.

6



6. Turn on the switch and turn on the power to turn on the light