

WARNING

To avoid the risk of fire or electric shock, this product should be installed, inspected, and maintained by a qualified electrician only. Installation should be completed by an individual familiar with the construction and operation of the luminaire. Installation of luminaire must be in accordance with national and local building and electrical codes.

Safety Warning:

To avoid electric shock:

Be certain electrical power is OFF before and during installation and maintenance.

Luminaire must be supplied by a wiring system with an equipment grounding conductor.

To avoid burning hands:

Make sure lens and housing are cool when performing maintenance.

To avoid product degradation:

Make sure the wire supply voltage is the same as the luminaire supply.

Use proper supply wiring as specified on the luminaire nameplate.

Avoid use in environments containing sulfur, chlorine, or other halides, methyl acetate or ethyl acetate, cyanoacrylates, glycolethers, formaldehyde or butadiene.

Notes:

Instructions do not cover all details and all possible product configurations.

Do not restrict luminaire ventilation.

Ensure LED luminaire is not covered with material that will prevent convection or conduction cooling.

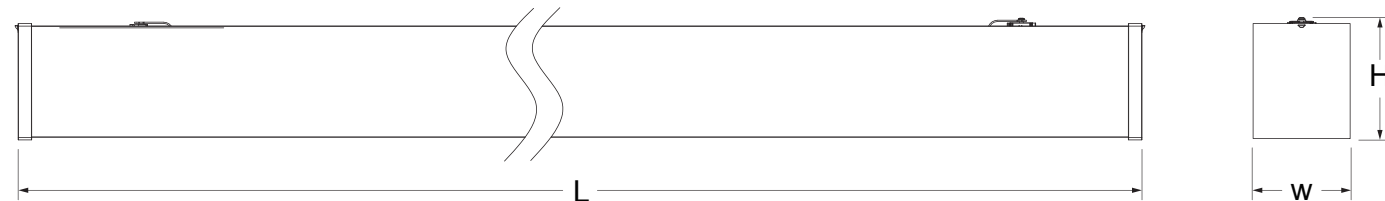
Ensure LED luminaire has the correct polarity before installation.

Avoid exposing wiring to metal edges and sharp objects.

Maintenance:

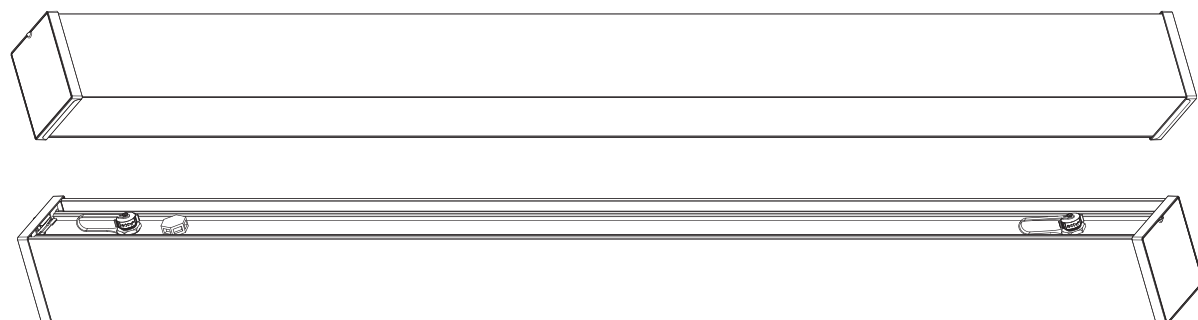
Perform visual, electrical, and mechanical inspections on a regular basis. The environment and frequency of use should determine this. However, it is recommended that checks be made at least once a year. Electrically check to make sure that all connections are clean and tight. Mechanically check that all parts are properly assembled.

MULTIPLE FIXTURES INSTALLATION

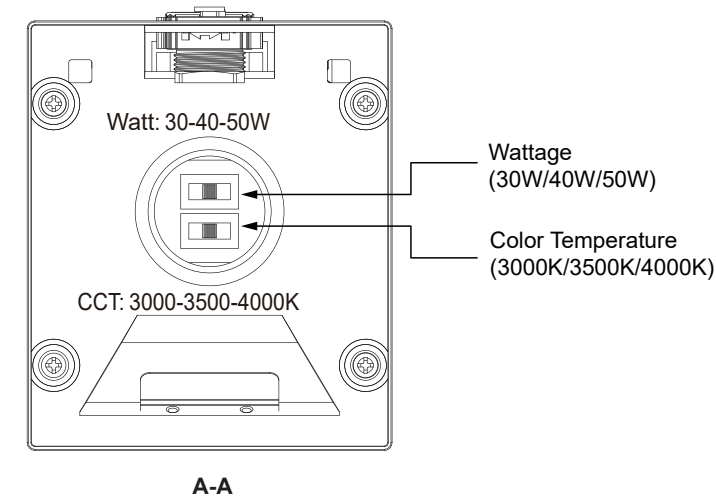


SIZE	L	W	H
4FT	47.8"(1215mm)	3.15"(80mm)	3.7"(94mm)
8FT	95.1"(2415mm)	3.15"(80mm)	3.7"(94mm)

Luminaire Profile

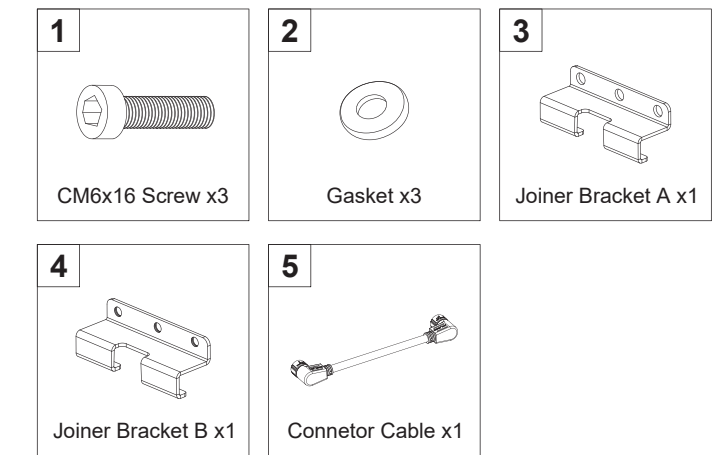


CCT and Wattage Adjustment

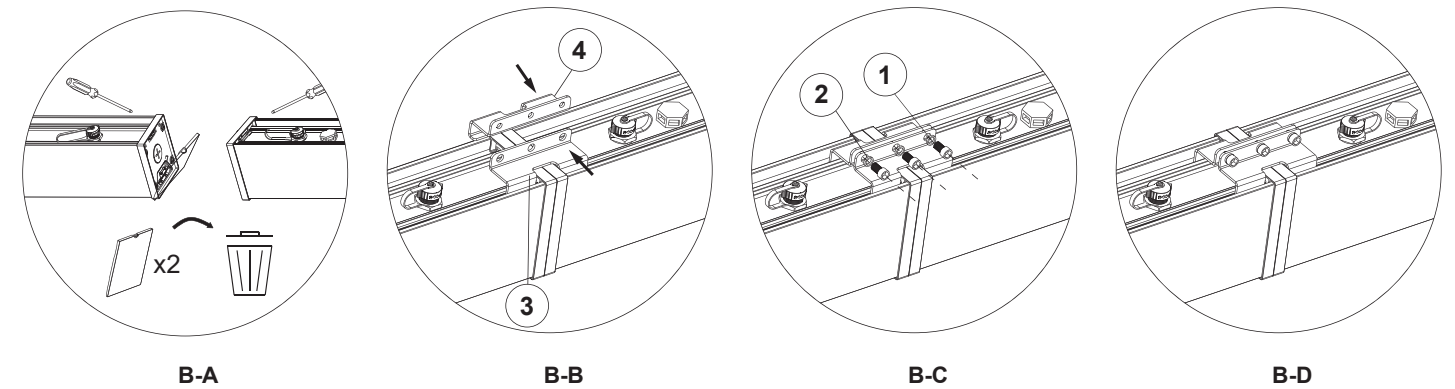


Adjust the color temperature and wattage to the desired settings. (A-A)

Mounting Accessories

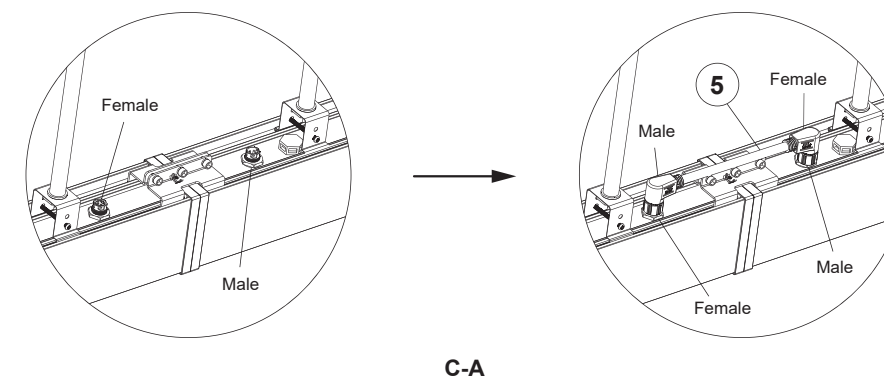


Fixture Connection



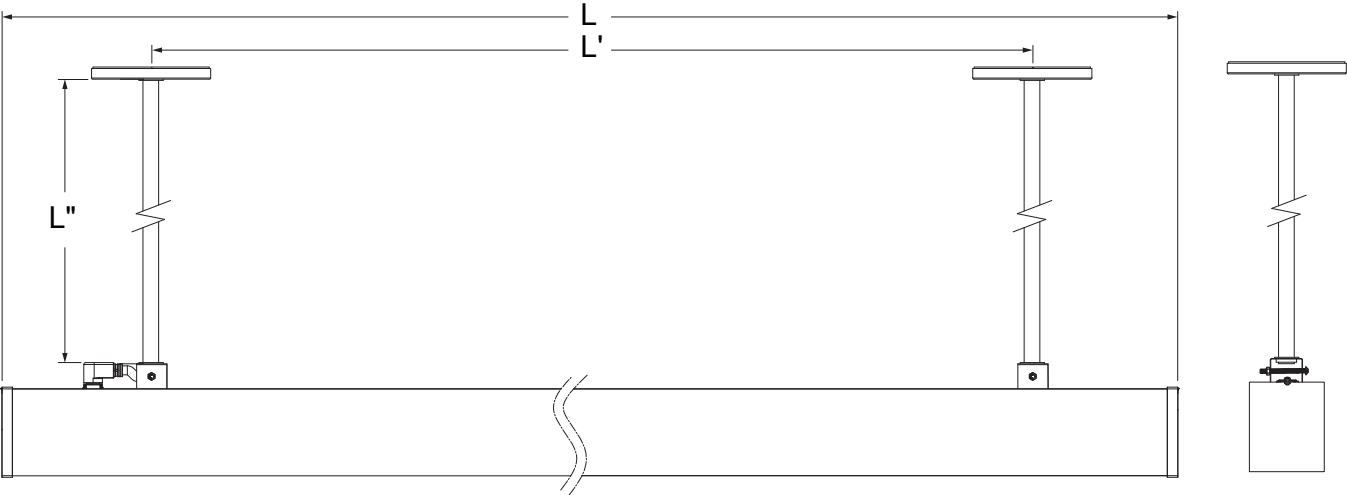
1. Remove the endcaps of the luminaires with a screwdriver. (B-A)
2. Push the joiner brackets straight into the luminaire body. (B-B)
3. Secure the two joiner brackets to each other with the gaskets and screws. (B-C)
4. See the installation completion diagram above. (B-D)

Electrical Connection



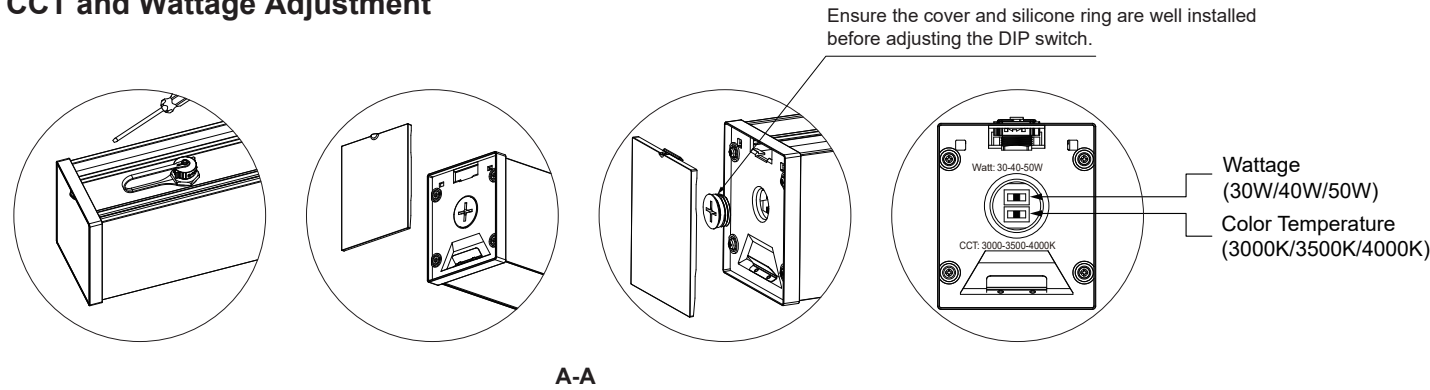
Connect the cable to the spliced fixture. Ensure proper connection of both ends as illustrated: male connector to female socket and female connector to male socket. (C-A)

ROD-MOUNT INSTALLATION



SIZE	L	L'	L''
4FT	47.8"(1215mm)	35"-42"(889-1041mm)	2'(609mm)
8FT	95.1"(2415mm)	82"-88"(2089-2241mm)	2'(609mm)

CCT and Wattage Adjustment



Adjust the color temperature and wattage to the desired settings. (A-A)

Mounting Accessories

1

2

3

4

5

6

7

8

9

10

11

12

13

Mounting Procedures

1

2

3

4

5

6

Power Side

Non-Power Side

7

8

Power Side

Non-Power Side

5

8

Power Side

Non-Power Side

8

9

Power Side

Non-Power Side

10

11

Power Side

Non-Power Side

11

12

Power Side

Non-Power Side

13

14

Power Side

Non-Power Side

15

16

Power Side

Non-Power Side

17

18

Power Side

Non-Power Side

19

20

Power Side

Non-Power Side

21

22

Power Side

Non-Power Side

23

24

Power Side

Non-Power Side

25

26

Power Side

Non-Power Side

27

28

Power Side

Non-Power Side

29

30

Power Side

Non-Power Side

31

32

Power Side

Non-Power Side

33

34

Power Side

Non-Power Side

35

36

Power Side

Non-Power Side

37

38

Power Side

Non-Power Side

39

40

Power Side

Non-Power Side

41

42

Power Side

Non-Power Side

43

44

Power Side

Non-Power Side

45

46

Power Side

Non-Power Side

47

48

Power Side

Non-Power Side

49

50

Power Side

Non-Power Side

51

52

Power Side

Non-Power Side

53

54

Power Side

Non-Power Side

55

56

Power Side

Non-Power Side

57

58

Power Side

Non-Power Side

59

60

Power Side

Non-Power Side

61

62

Power Side

Non-Power Side

63

64

Power Side

Non-Power Side

65

66

Power Side

Non-Power Side

67

68

Power Side

Non-Power Side

69

70

Power Side

Non-Power Side

71

72

Power Side

Non-Power Side

73

74

Power Side

Non-Power Side

75

76

Power Side

Non-Power Side

77

78

Power Side

Non-Power Side

79

80

Power Side

Non-Power Side

81

82

Power Side

Non-Power Side

83

84

Power Side

Non-Power Side

85

86

Power Side

Non-Power Side

87

88

Power Side

Non-Power Side

89

90

Power Side

Non-Power Side

91

92

Power Side

Non-Power Side

93

94

Power Side

Non-Power Side

95

96

Power Side

Non-Power Side

97

98

Power Side

Non-Power Side

99

100

Power Side

Non-Power Side

101

102

Power Side

Non-Power Side

103

104

Power Side

Non-Power Side

105

106

Power Side

Non-Power Side

107

108

Power Side

Non-Power Side

109

110

Power Side

Non-Power Side

111

112

Power Side

Non-Power Side

113

114

Power Side

Non-Power Side

115

116

Power Side

Non-Power Side

117

118

Power Side

Non-Power Side

119

120

Power Side

Non-Power Side

121

122

Power Side

Non-Power Side

123

124

Power Side

Non-Power Side

125

126

Power Side

Non-Power Side

127

128

Power Side

Non-Power Side

129

130

Power Side

Non-Power Side

131

132

Power Side

Non-Power Side

133

134

Power Side

Non-Power Side

135

136

Power Side

Non-Power Side

137

138

Power Side

Non-Power Side

139

140

Power Side

Non-Power Side

141

142

Power Side

Non-Power Side

143

144

Power Side

Non-Power Side

145

146

Power Side

Non-Power Side

147

148

Power Side

Non-Power Side

149

150

Power Side

Non-Power Side

151

152

Power Side

Non-Power Side

153

154

Power Side

Non-Power Side

155

156

Power Side

Non-Power Side

157

158

Power Side

Non-Power Side

159

160

Power Side

Non-Power Side

161

162

Power Side

Non-Power Side

163

164

Power Side

Non-Power Side

165

166

Power Side

Non-Power Side

167

168

Power Side

Non-Power Side

169

170

Power Side

Non-Power Side

171

172

Power Side

Non-Power Side

173

174

Power Side

Non-Power Side

175

176

Power Side

Non-Power Side

177

178

Power Side

Non-Power Side

179

180

Power Side

Non-Power Side

181

182

Power Side

Non-Power Side

183

184

Power Side

Non-Power Side

185

186

Power Side

Non-Power Side

187

188

Power Side

Non-Power Side

189

190

Power Side

Non-Power Side

191

192

Power Side

Non-Power Side

193

194

Power Side

Non-Power Side

195

196

Power Side

Non-Power Side

197

198

Power Side

Non-Power Side

199

200

Power Side

Non-Power Side

201

202

Power Side

Non-Power Side

203

204

Power Side

Non-Power Side

205

206

Power Side

Non-Power Side

207

208

Power Side

Non-Power Side

209

210

Power Side

Non-Power Side

211

212

Power Side

Non-Power Side

213

214

Power Side

Non-Power Side

215

216

Power Side

Non-Power Side

217

218

Power Side

Non-Power Side

219

220

Power Side

Non-Power Side

221

222

Power Side

Non-Power Side

223

224

Power Side

Non-Power Side

225

226

Power Side

Non-Power Side

227

228

Power Side

Non-Power Side

229

230

Power Side

Non-Power Side

231

232

Power Side

Non-Power Side

233

234

Power Side

Non-Power Side

235

236

Power Side

Non-Power Side

237

238

Power Side

Non-Power Side

239

240

Power Side

Non-Power Side

241

242

Power Side

Non-Power Side

243

244

Power Side

Non-Power Side

245

246

Power Side

Non-Power Side

247

248

Power Side

Non-Power Side

249

250

Power Side

Non-Power Side

251

252

Power Side

Non-Power Side

253

254

Power Side

Non-Power Side

255

256

Power Side

Non-Power Side

257

258

Power Side

Non-Power Side

259

260

Power Side

Non-Power Side

261

262

Power Side

Non-Power Side

263

264

Power Side

Non-Power Side

265

266

Power Side

Non-Power Side

267

268

Power Side

Non-Power Side

269

270

Power Side

Non-Power Side

271

272

Power Side

Non-Power Side

273

274

Power Side

Non-Power Side

275

276

Power Side

Non-Power Side

277

278

Power Side

Non-Power Side

279

280

Power Side

Non-Power Side

281

282

Power Side

Non-Power Side

283

284

Power Side

Non-Power Side

285

286

Power Side

Non-Power Side

287

288

Power Side

Non-Power Side

289

290

Power Side

Non-Power Side

291

292

Power Side

Non-Power Side

293

294

Power Side

Non-Power Side

295

296

Power Side

Non-Power Side

297

298

Power Side

Non-Power Side

299

300

Power Side

Non-Power Side

301

302

Power Side

Non-Power Side

303

304

Power Side

Non-Power Side

305

306

Power Side

Non-Power Side

307

308

Power Side

Non-Power Side

309

310

Power Side

Non-Power Side

311

312

Power Side

Non-Power Side

313

314

Power Side

Non-Power Side

315

316

Power Side

Non-Power Side

317

318

Power Side

Non-Power Side

319

320

Power Side

Non-Power Side

321

322

Power Side

Non-Power Side

323

324

Power Side

Non-Power Side

325

326

Power Side

Non-Power Side

327

328

Power Side

Non-Power Side

329

330

Power Side

Non-Power Side

331

332

Power Side

Non-Power Side

333

334

Power Side

Non-Power Side

335

336

Power Side

Non-Power Side

337

338

Power Side

Non-Power Side

339

340

Power Side

Non-Power Side

341

342

Power Side

Non-Power Side

343

344

Power Side

Non-Power Side

345

346

Power Side

Non-Power Side

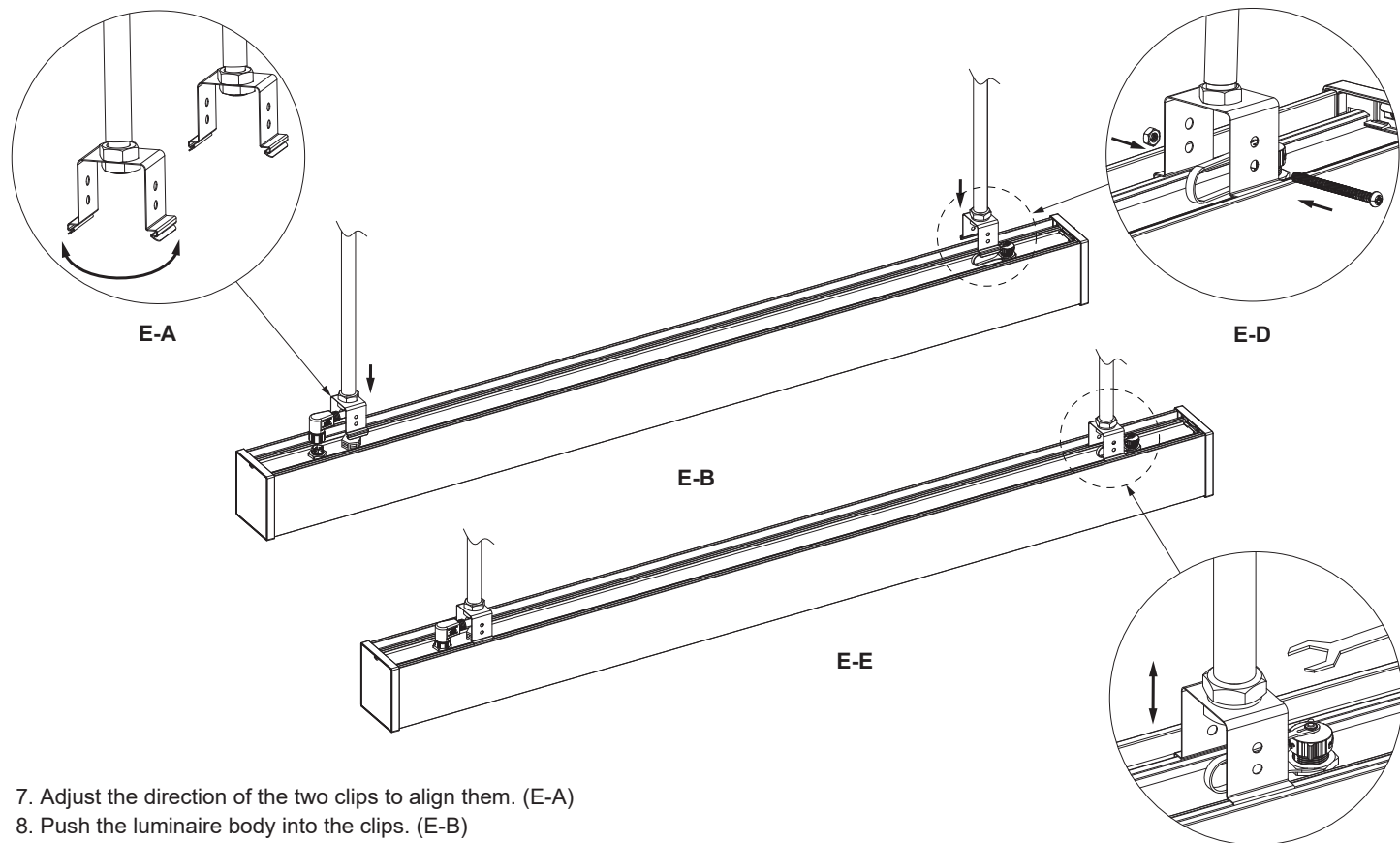
347

348

Power Side

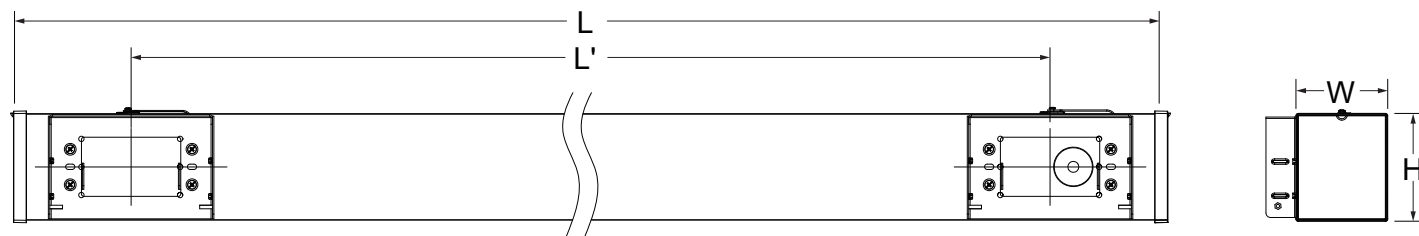
Non-Power Side

349

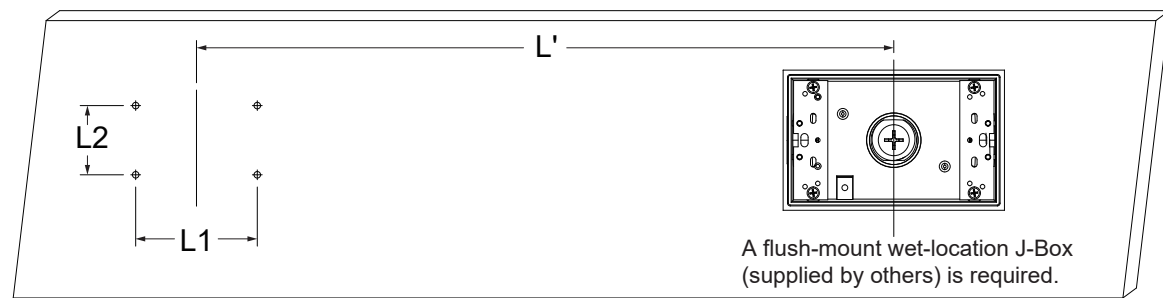


7. Adjust the direction of the two clips to align them. (E-A)
8. Push the luminaire body into the clips. (E-B)
9. Adjust the nuts on the clips with a wrench to level both ends of the luminaire body. (E-C)
10. Secure the clips to the luminaire body with the threaded rods and nuts provided with the clips. (E-D)
11. Fully plug the female connector of the cable into the male socket on the luminaire body. (E-E)

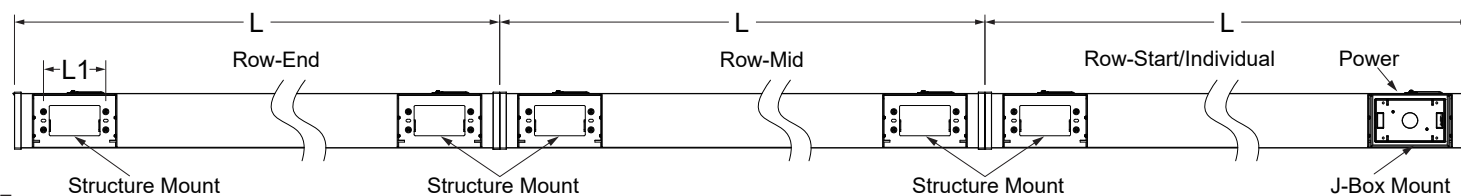
WALL-MOUNT INSTALLATION



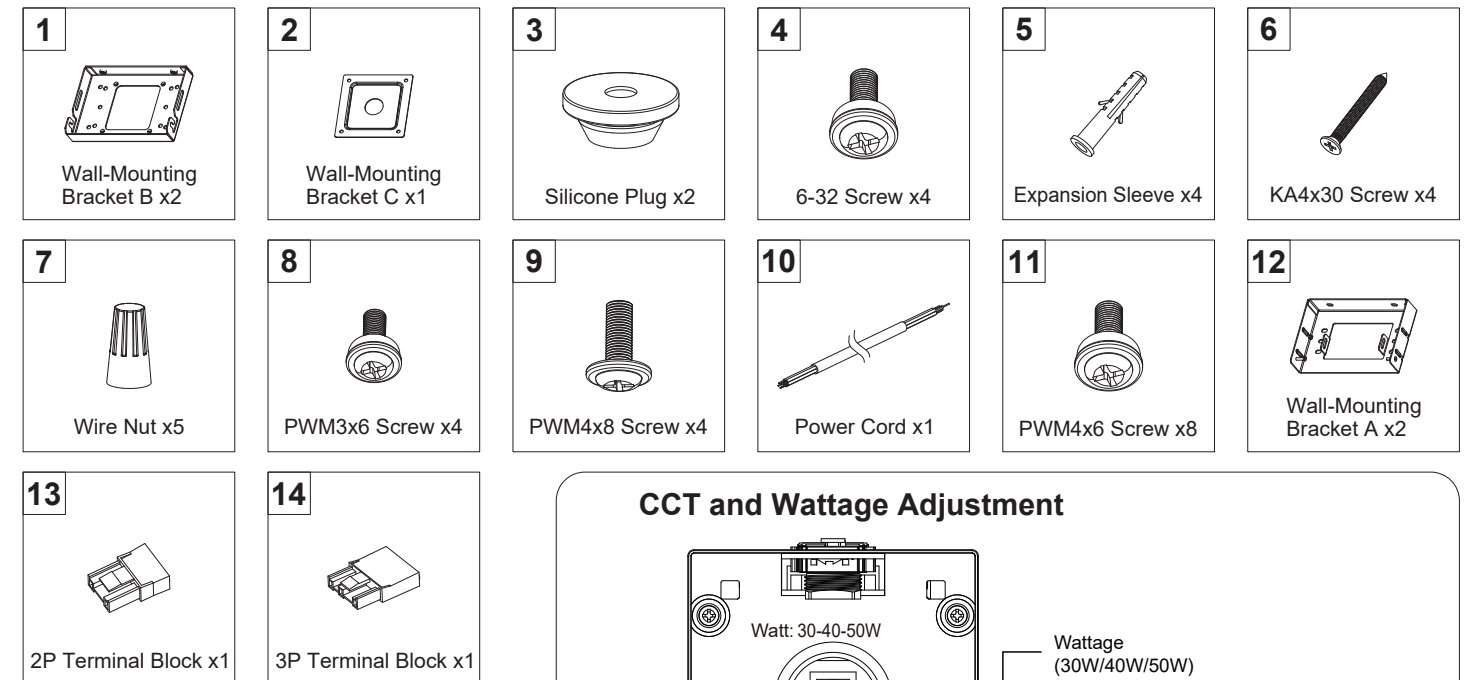
SIZE	L	L'	L1	L2	W	H
4FT	47.8"(1215mm)	40"(1016mm)	3.28"(83.5mm)	1.27"(47.5mm)	3.15"(80mm)	3.72"(94.5mm)
8FT	95.1"(2415mm)	87"(2216mm)	3.28"(83.5mm)	1.27"(47.5mm)	3.15"(80mm)	3.72"(94.5mm)



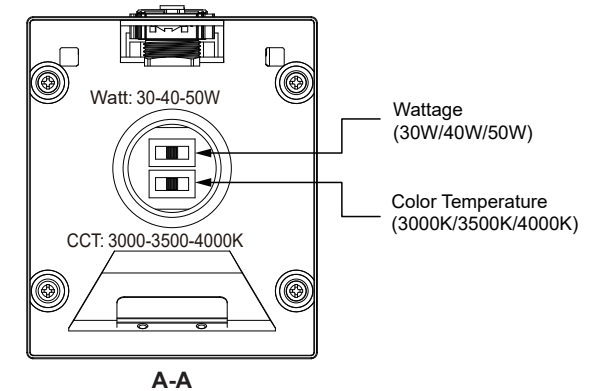
Rough-in Structure and Power



Mounting Accessories

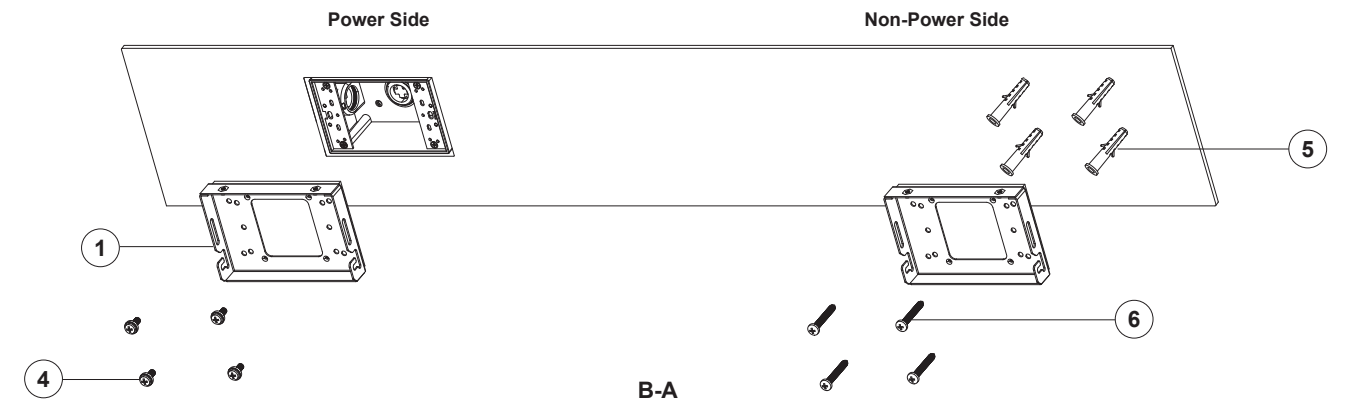


CCT and Wattage Adjustment

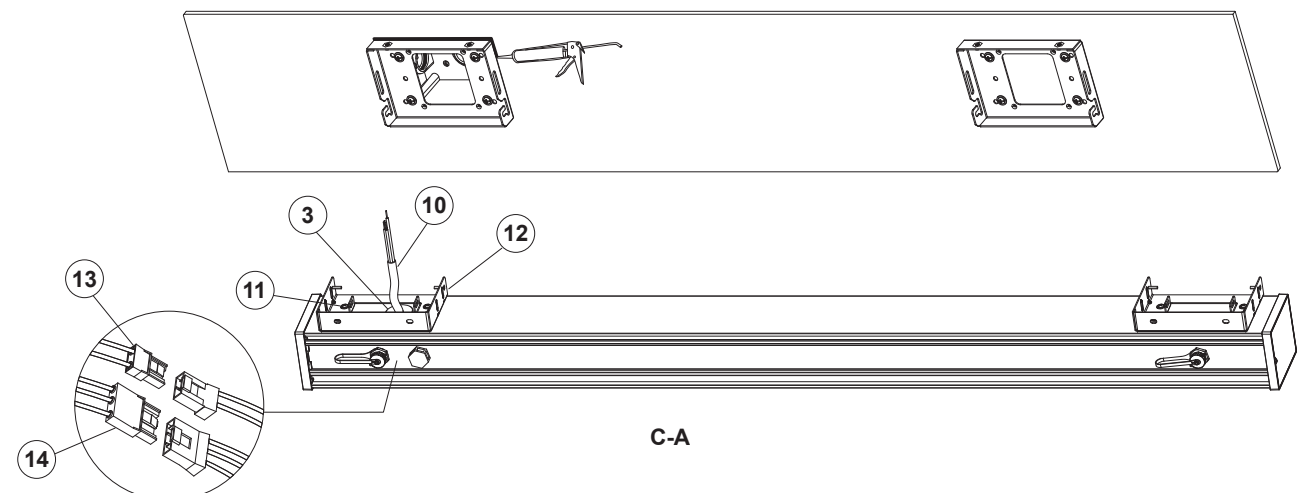


Adjust the color temperature and wattage to the desired settings. (A-A)

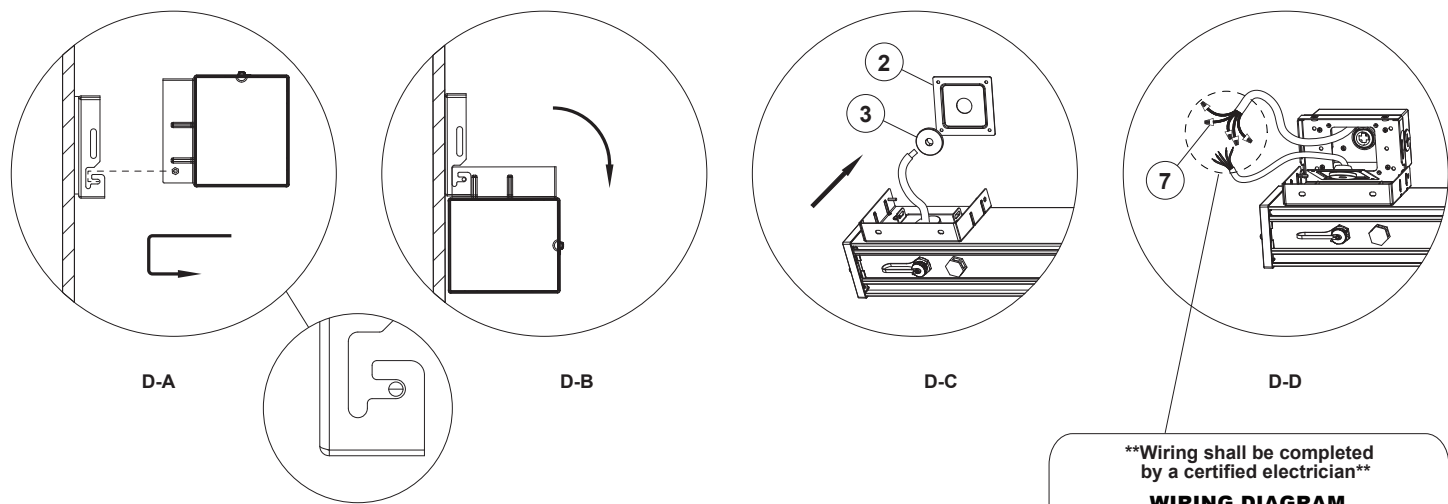
Mounting Procedures



1. Mount bracket B on the power side at the appropriate location using 6-32 screws fitted with silicone O-rings.
2. Mount the second bracket B on the non-power side with the expansion anchors. (B-A)



3. Apply waterproof sealant around bracket B on the power side. (C-A)

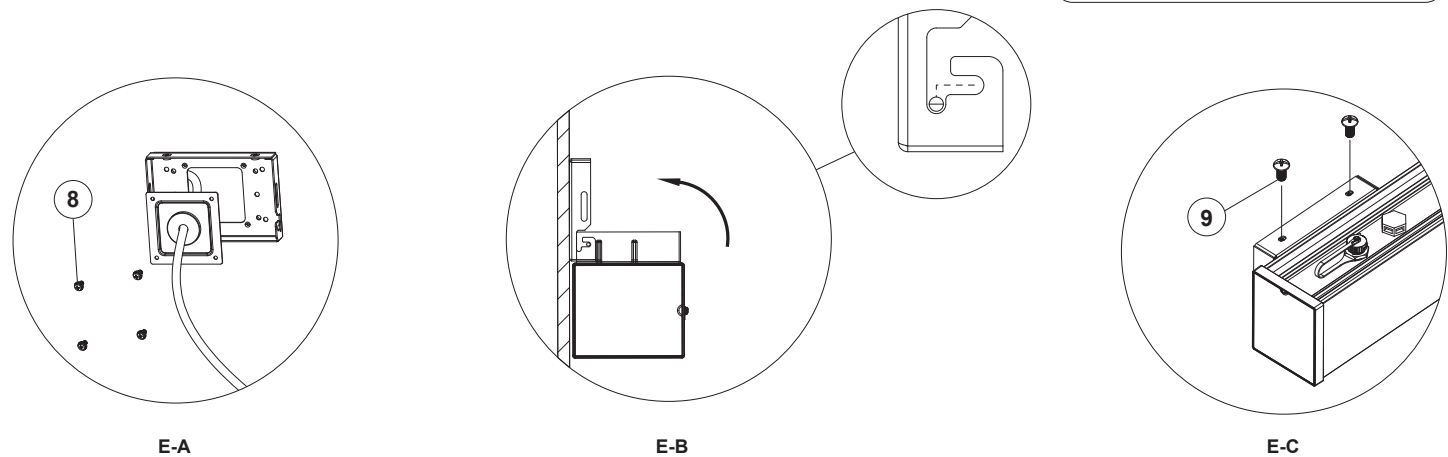


3. Place the luminaire body into mounting brackets B. (D-A)
Then, rotate and fasten it onto the wall. (D-B)
4. Insert the silicone plug into the hole on bracket C. Then, feed the power cord through the plug.
(To ease threading, wrap the power cord end with tape.) (D-C)
5. Connect the wires according to the wiring diagram. (D-D)

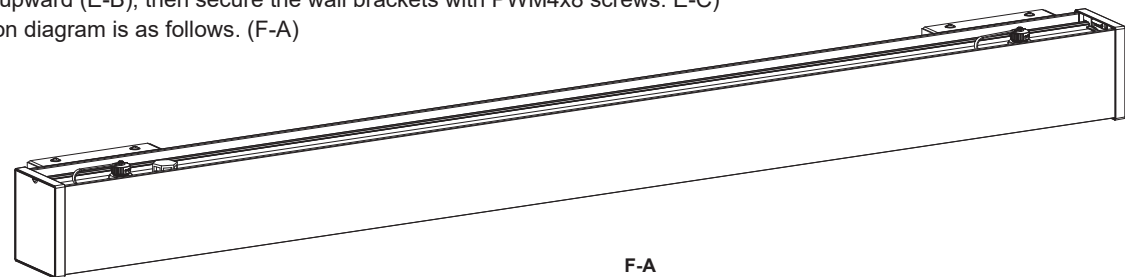
****Wiring shall be completed by a certified electrician****

WIRING DIAGRAM

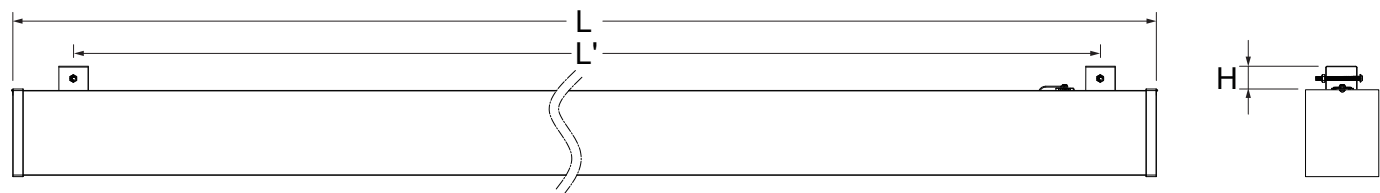
LINE	●	BLACK
NEUTRAL	●	WHITE
GREEN	●	GROUND
DIM (+)	●	VIOLET
DIM (-)	●	PINK



6. Secure mounting brackets C to B using PWM3x6 screws fitted with O-rings. (E-A)
7. Push the luminaire body upward (E-B), then secure the wall brackets with PWM4x8 screws. (E-C)
8. The installation completion diagram is as follows. (F-A)

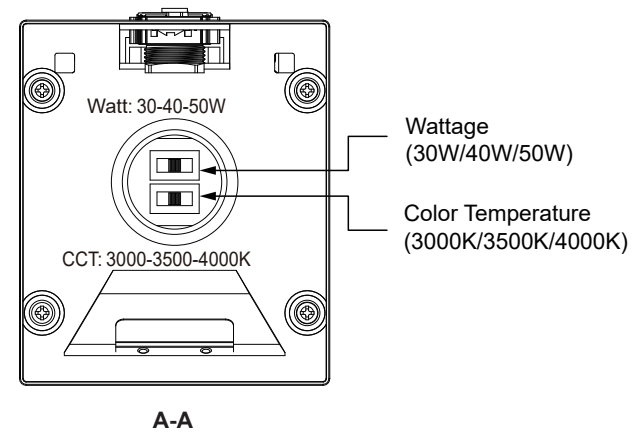


SURFACE-MOUNT INSTALLATION

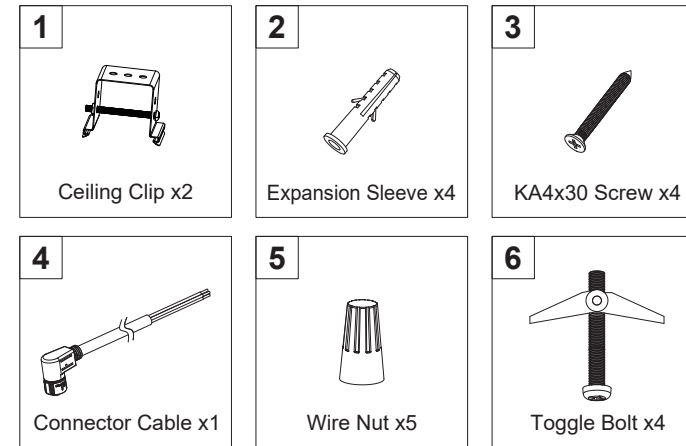


SIZE	L	L'	H
4FT	47.8"(1215mm)	35"-42"(889-1041mm)	1.1"(28.8mm)
8FT	95.1"(2415mm)	82"-88"(2089-2241mm)	1.1"(28.8mm)

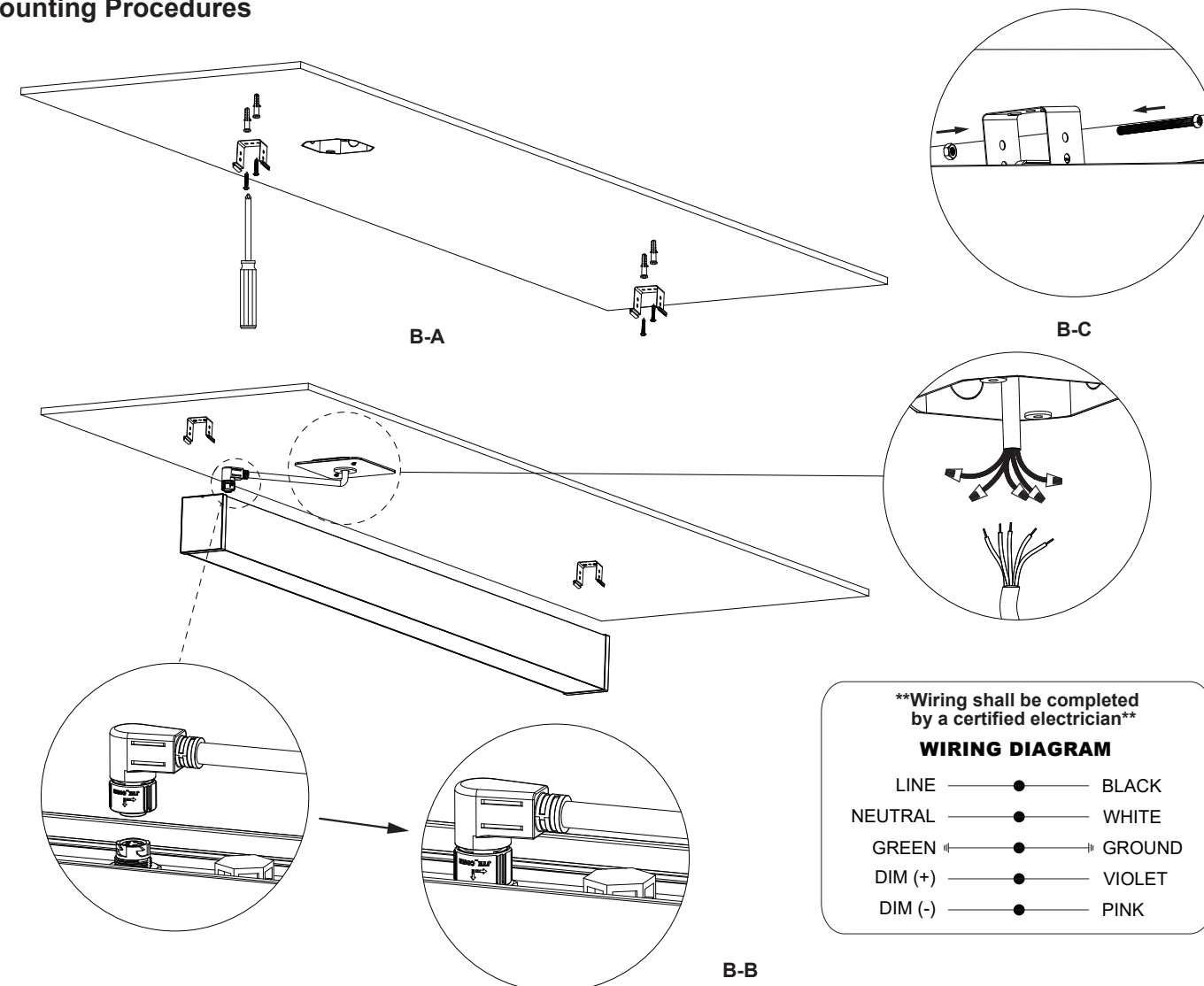
CCT and Wattage Adjustment



Mounting Accessories



Mounting Procedures



****Wiring shall be completed by a certified electrician****

WIRING DIAGRAM

LINE	●	BLACK
NEUTRAL	●	WHITE
GREEN	●	GROUND
DIM (+)	●	VIOLET
DIM (-)	●	PINK

1. Adjust the color temperature and wattage to the desired settings. (A-A)
2. Secure the clips to the ceiling with the expansion anchors (for thin ceilings) or toggle bolts (for thick ceilings). (B-A)
3. After the wires are properly connected, snap the luminaire body into the clips. (B-B)
4. Secure the clips with the threaded rods and nuts. (B-C)
5. The installation completion diagram is as follows. (C-A)

