

CHNL4 | Suspended Architectural Channel Linear

Overview

The CHNL is a suspended architectural linear that brings style, flare, and functionality to commercial and corporate environments with a specially designed channel shape to provide beautiful, low glare illumination.

Part #:

CHNL4 | Architectural Channel Linear

Lumens:

High Lumen:
1,625 Lm per ft.
12.5 W per ft.

Med Lumen:
1,300 Lm per ft.
10 W per ft.

Low Lumen:
975 Lm per ft.
7.5 W per ft.

Color:

CCT:
2700K
3000K
3500K
4000K
5000K
Tunable White

CRI:
90

Voltage:

Standard:
120-277 V

Dimming:

Standard:
0-10V - 5%

Options:
0-10V - 1%,
Dim to Warm,
Tunable

Lifetime:

Standard:
L80 > 50,000 Hrs.

Operating Temperature:

Standard:
-4°F to 104°F

Finishes:



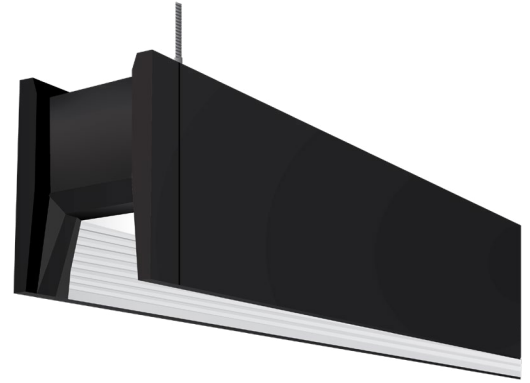
*Silver gray RAL color is approximate, not exact.

**All custom color requests must be call to order and will affect leadtimes. Accommodation for RAL color code is available.



CHNL4D

Suspended Mount



Features:

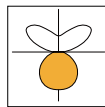
Your size, your way
Choose from standard lengths or customize to the inch.

Bend the light to your whims
Configurable options for indirect / direct combinations (5 settings)
Configurable power output (3 settings)

Aluminum housing and end caps
Designed for minimizing light leak and high performance. No shortcuts on material.

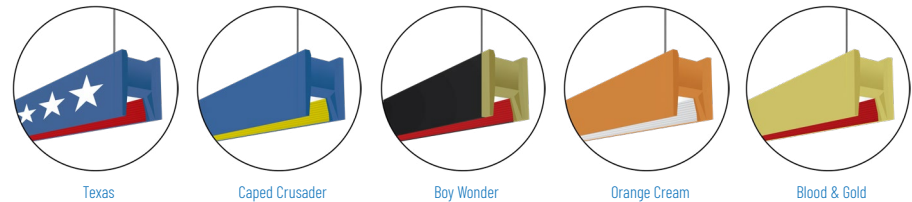
Optics:

Photometry:



Down 100%

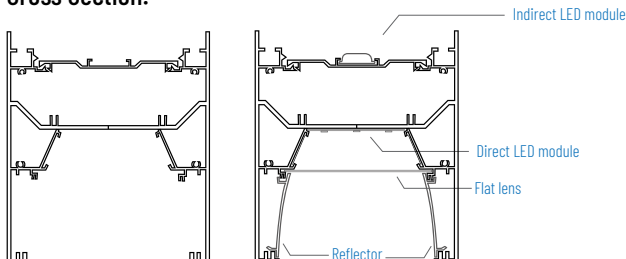
Accent Samples:



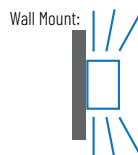
Dimensions:

Length	Width	Height
2 1/4 FT	4 IN	5.2 IN

Cross Section:



Also available in:



Type:	Project:	Submitted by:	Date:
Ordering information:			

CHNL4 | Suspended Architectural Channel Linear

Example: CHNL4 D PDC 6 H64 940K BW FD 120-277 CB12 DIM-5 BLK

Ordering Guide:
Use the buttons below to build out a product number.

Select one option per numbered section. if a preferred option is not here, please contact your local SPRNG representative for more information.

Linear Body			Output and color			
1 Series	2 Distribution	3 Mount	4 Total Length ¹	5 Output ²	6 Voltage	7 CCT/CRI
CHNL4 CHNL - Suspended Architectural Channel Linear	D Direct - Downlight	PDW Pendant - Dry wall ceiling PDC Pendant - Drop ceiling	IF Individual Fixture Length L x L-Shape (please input length x width) R x Rectangle (please input length x width) S Square (please input length) U x x U-Shape (please input length per side) T x x T-Shape (please input length per side) Y x x Y-Shape (please input length per side) V x x x V-Shape (please input length per side) X x x x X-Shape (please input length per side) CS Custom Shape (Please specify to the FT). <small>¹NOTE: Standard individual fixtures available in 2, 3, 4, 6, & 8 ft lengths. For Patterns, please specify shape and overall dimensions. Example</small>	H (High) 1,625 Lumens / 12.5 Watts per FT M (Medium) 1,300 Lumens / 10 Watts per FT L (Low) 975 Lumens / 7.5 Watts per FT CL Custom Lumens (Please specify) ³ CW Custom Watts (Please specify) ⁴ <small>²Please consult your local SPRNG representative for details on Custom Lumens &/or Watts.</small>	BLANK 120V-277V	927 90 CRI - 2700K 930 90 CRI - 3000K 935 90 CRI - 3500K 940 90 CRI - 4000K 950 90 CRI - 5000K

Hard Optics	Dimming	Finishing		Backups & Controls
8 Optics	9 Dimming Driver	10 Shielding Finish	11 Finish	12 Emergency
FD Frosted flat diffuser - Standard	DIM 0-10V 5%	RBBR Ribbed Brushed - Standard RBMWH Ribbed White RBMBL Ribbed Black RBBGO Ribbed Gold RBWH Ribbed Wheat	BL Midnight black - RAL9005 WH Pearly gate white - RAL9016 SG Shining silver gray - RAL7045 ----- RAL color code	BLANK No Emergency Backup EM 8W Emergency Battery backup ⁴ GE Generator emergency circuit ⁵ <small>**Not available for 2ft lengths.</small> <small>⁴Note: Continuous runs of over 8FT might require more than one Emergency Backup. Please specify if so. Example: 2EM.</small> <small>⁵Note: Continuous runs of over 8FT might require more than one Emergency Circuit. Please specify if so. Example: 2GE.</small>

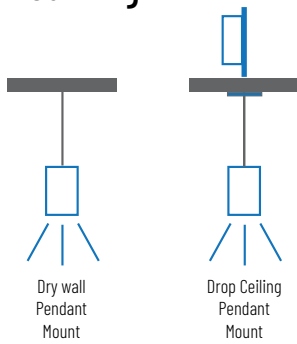
CHNL4 | Suspended Architectural Channel Linear

Performance Data:

	2700K (90 CRI)	3000K (90 CRI)	3500K (90 CRI)	4000K (90 CRI)	5000K (90 CRI)
Lumens Per FT	1200 Lm/FT	1200 Lm/FT	1250 Lm/FT	1250 Lm/FT	1250 Lm/FT
Watts per FT	10W/FT	10W/FT	10W/FT	10W/FT	10W/FT
Lumens per Watt	120 Lm/W	120 Lm/W	125 Lm/W	125 Lm/W	125 Lm/W

Lumen output based on optics being used. Optics tables available soon. This is an early draft spec sheet, intended for internal use only.

Mounting:



Additional Available Mounts:



Wall Mount