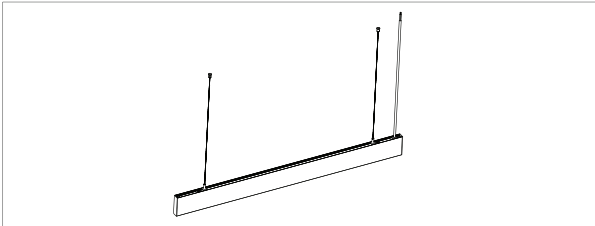


INSTALLATION MANUAL

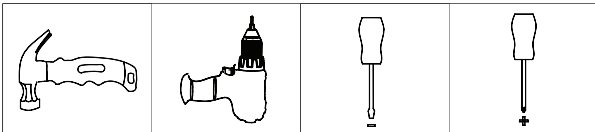
NANO1 Slim linear light

! This equipment is intended to be installed only by qualified personnel. The installation must be made in accordance with the current edition of the National Electrical Code (NEC) and all applicable state and local building codes. The final installation must be approved by the appropriate, qualified electrical / building inspector(s). Improper installation may result in a fire or electrical hazard. Ensure the electrical power to the circuit has been disconnected before installing the electrical system.

A. Rope Suspension Installation

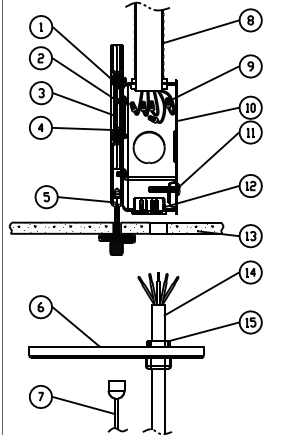


Tool

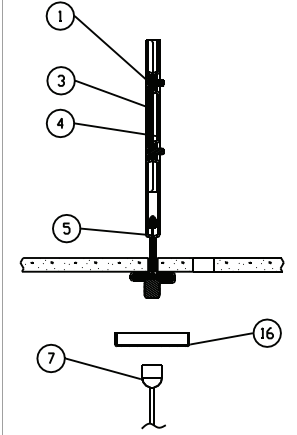


Pendant

Mount incoming

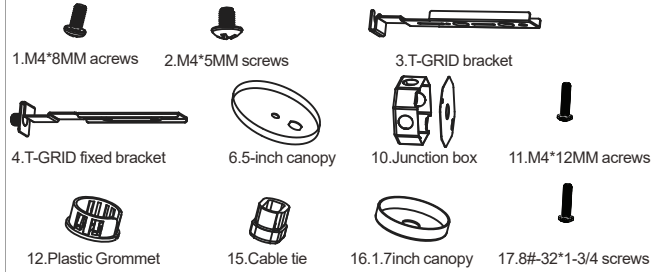


line Non-incoming line



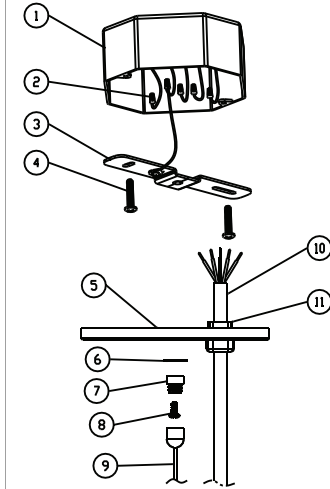
list

- | | |
|------------------------------------|---|
| 1. M4*8MM acrews x4PCS | 2. M4*5MM screws x2PCS |
| 3. T-GRID fixed bracket x2PCS | 4. T-GRID fixed bracket x2PCS |
| 5. T-GRID (other provided) | 6. 5-inch canopy x2PCS |
| 7. Aircraft cable (other provided) | 8. Armored Cable & Connector (other provided) |
| 9. Wire Nut (other provided) | 10. Junction box x1PCS |
| 11. M4*12MM acrews x2PCS | 12. Plastic Grommet x1PCS |
| 13. Ceiling Tile (other provided) | 14. AC power cord (other provided) |
| 15. Cable tie x2PCS | 16. 1.7inch canopy x1PCS |
| 17. 8#-32*1-3/4 screws x4PCS | |

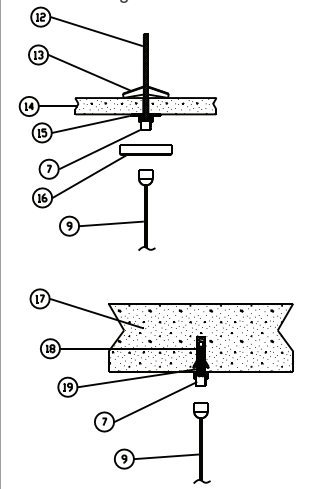


Drywall installation

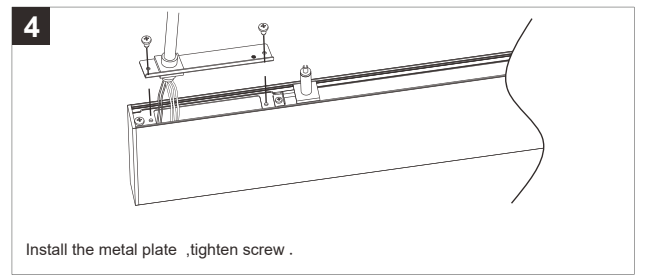
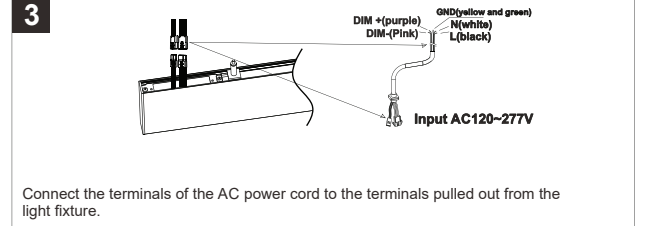
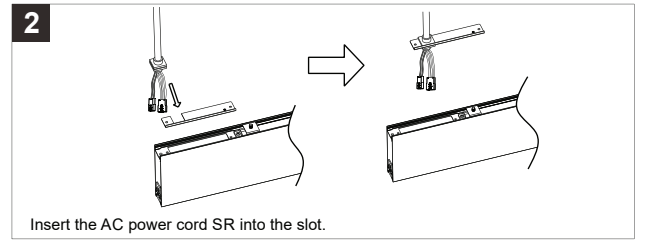
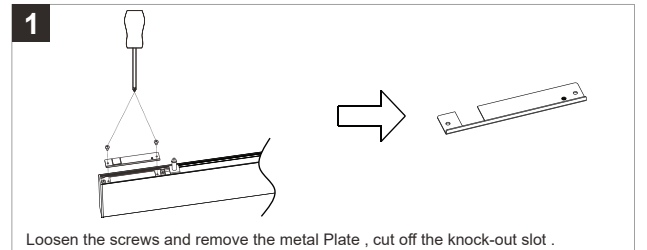
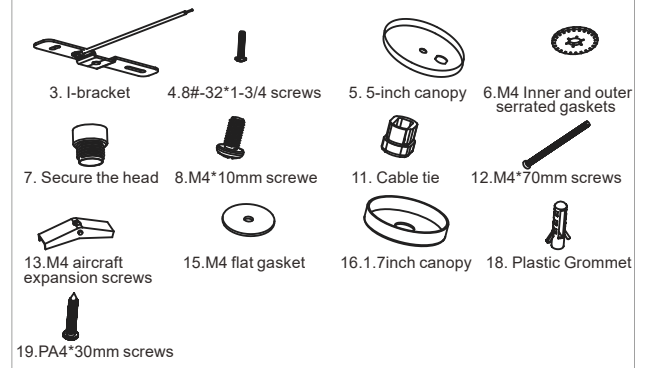
Incoming line



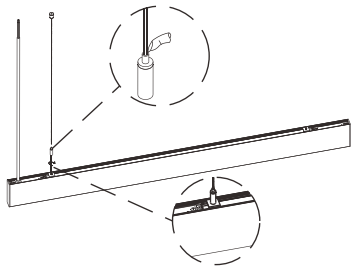
Non-incoming line



- | | |
|--|--|
| 1. Junction box (other provided); | 2. Wire Nut (other provided); |
| 3. I-bracket x1PCS | 4. 8#-32*1-3/4 screws x4PCS |
| 5. 5-inch canopy x2PCS | 6. M4 Inner and outer serrated gaskets x1PCS |
| 7. Secure the head x2PCS | 8. M4*10mm screw x2PCS |
| 9. Aircraft cable (other provided) | 10. AC power cord (other provided) |
| 11. Cable tie x1PCS | 12. M4*70mm screws x2PCS |
| 13. M4 aircraft expansion screws x2PCS | 14. Drywall Ceiling (other provided) |
| 15. M4 flat gasket x2PCS | 16. 1.7inch canopy x1PCS |
| 17. Solid Ceiling (other provided) | 18. Plastic Grommet x4PCS |
| 19. PA4*30mm screws x4PCS | |

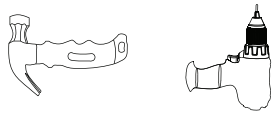
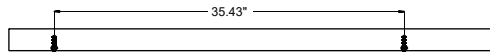


5



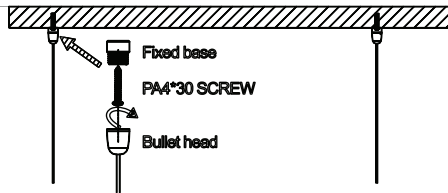
Secure the locking device to the bracket, then adjust the suspension cable on the fixed bracket.

6



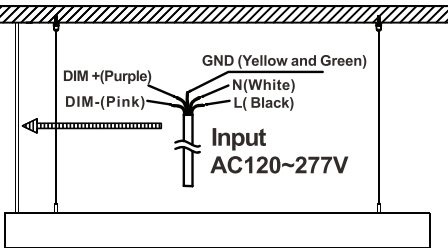
Drill 2 holes of 5mm in diameter at the location required for installation. Then install the plastic anchor to the hole with hammer.

7



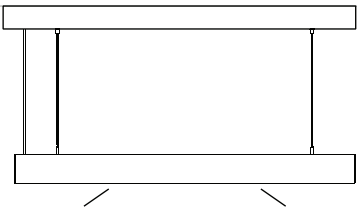
Fix the Aircraft rope base on the ceiling with screw, Lock the bullet head of the rope to the base.

8



The AC input cable connected to the AC power

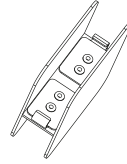
9



Complete the installation and turn on the lights.

B.Linkable Instruction

Installation Kits

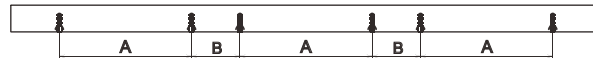


Splicing components 1PCS



Rubber plug 2PCS

1

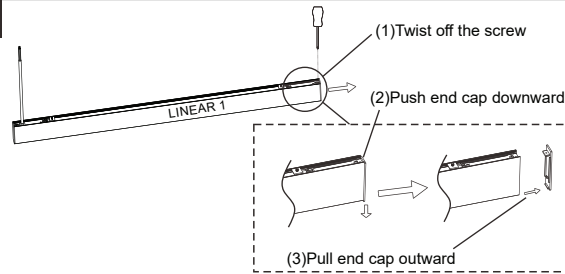


Suggested spacing for ceiling drilling holes

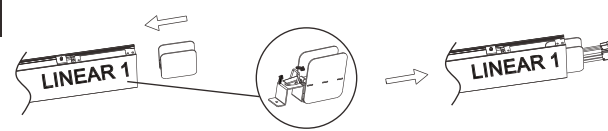
	A(in)	B(in)
2FT	11.81	11.81
4FT	35.43	11.81
8FT	82.68	11.81

Drill holes of 5mm in diameter at the location required for installation. Then install the plastic anchor to the hole with hammer.

2

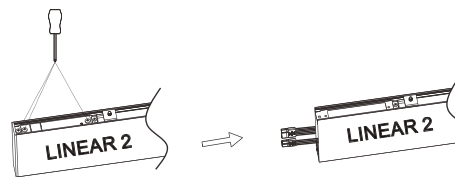


3



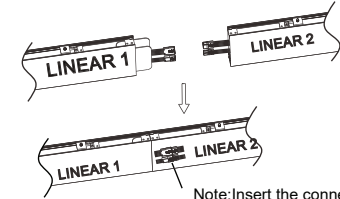
Insert the Linkable bracket, Fasten with the Buckle inside the fixture. Pull out the linkable wire.

4



Remove the End cap and metal plate of the LINEAR 2, pull out the linkable wire.

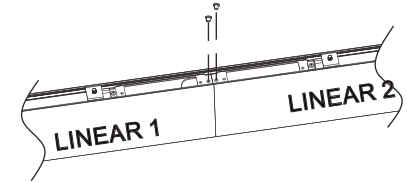
5



Note: Insert the connected terminal wire into the LINEAR 2 lamp body and lay the terminal wire flat at the bottom of the lamp body

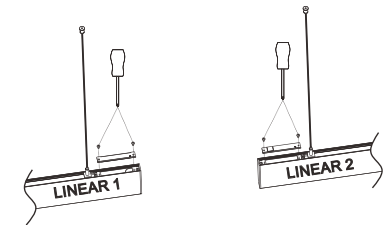
Insert the splicing wires together and then clip the splicing piece into LINEAR 2, finally LINEAR 2 like LINEAR 1 fasten the spring buckle onto the other end of the splicing

6



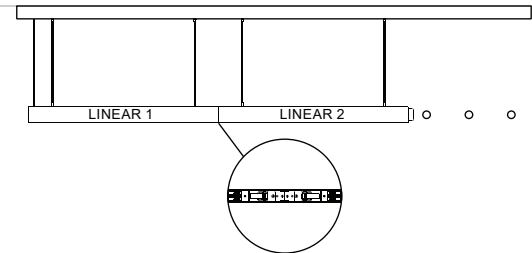
After the splicing is completed, install the rubber plug onto the hole

7

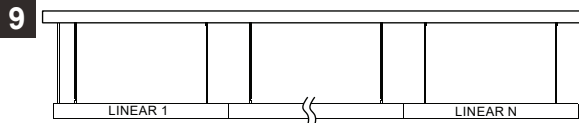


Reinstall the metal plate onto the light fixture.

8

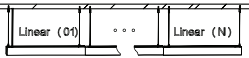


Follow the steps above to assemble the lighting fixtures together, check the status after linked make sure no any gap between two linears



NOTE:
LED LINEAR CAN BE GAPLESS LINKABLE TOGETHER AS NEEDED,
(if you order to use 18# cord, More Links can be Customized.)

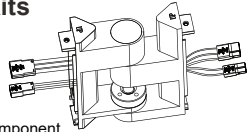
Link Instruction and Disclaimer



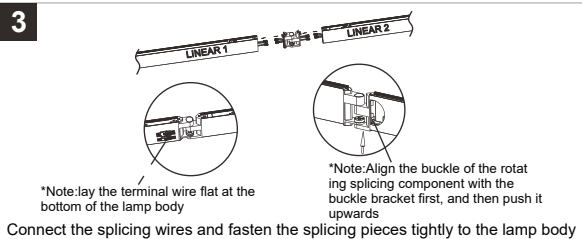
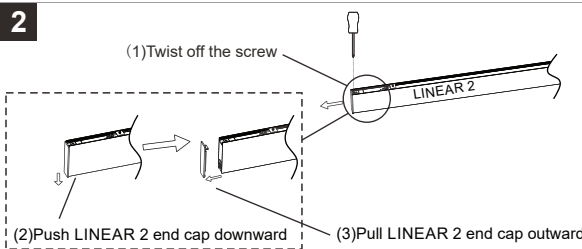
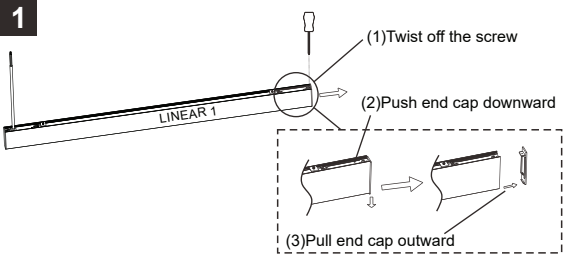
Max. linkable Quantity (Unit:PC)
Linkable fixtures Qty need to meet the below two conditions:
1) $N \leq 7$ pcs
2) Input voltage = 120V, $N \cdot P \leq 420W$
Input voltage = 277V, $N \cdot P \leq 960W$
Note: N = Qty of linkable fixtures,
P = Wattage per fixture

B1).Rotatable linkable Instruction

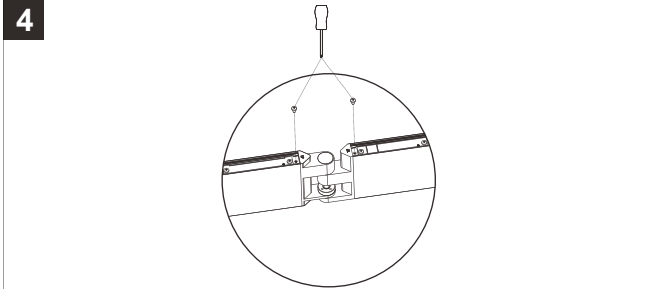
Installation Kits



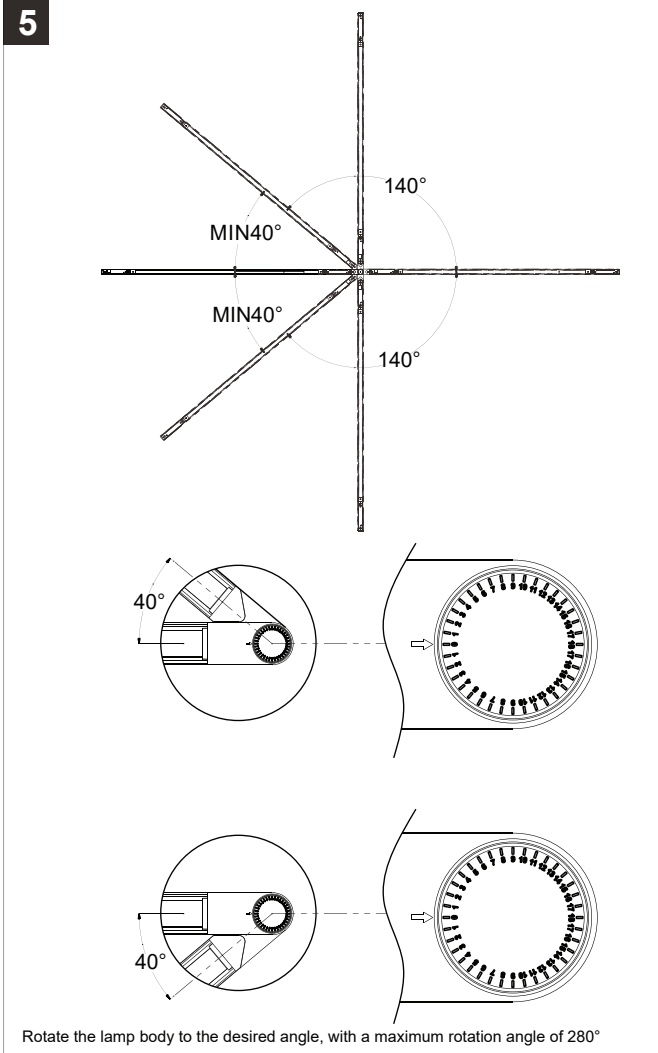
Rotatable splicing component
1PCS



Connect the splicing wires and fasten the splicing pieces tightly to the lamp body

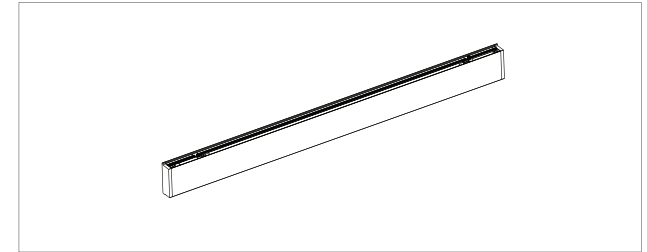


Reinstall the end cap

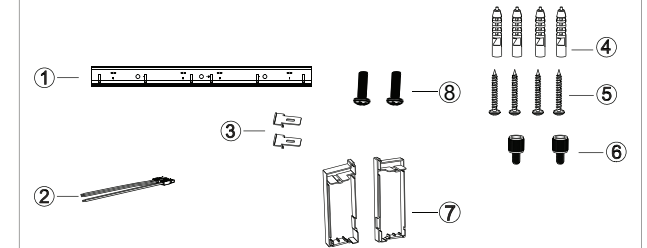


Rotate the lamp body to the desired angle, with a maximum rotation angle of 280°

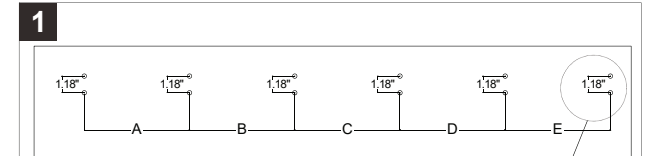
C.Wall Mount



Installation Kits



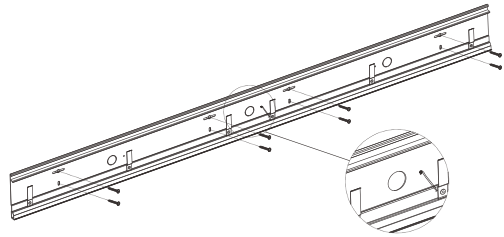
1	C Wall-mount Bracket	1PC
2	Input line with terminal	1PC
3	L support	2PCS
4	Plastic Anchor	4PCS
5	Cross head tapping	4PCS
6	Hand screw	2PCS
7	End cap	2PCS
8	M4*8 screw	2PCS



	A (in)	B (in)	C (in)	D (in)	E (in)
2FT	14.96	/	/	/	/
4FT	14.96	7.87	14.96	/	/
8FT	17.71	17.71	14.96	17.71	17.71

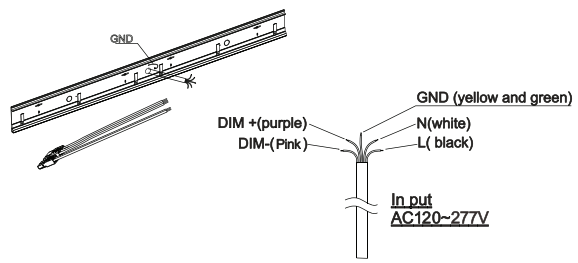
Drill Hole on the wall based on the Length of the Fixture, Fix the plastic anchor in the hole and fix the Wall Mount Bracket on the Wall.

2



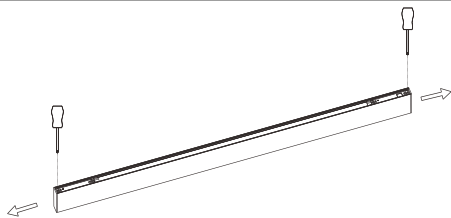
Use tools to shoot down the knock off piece

3



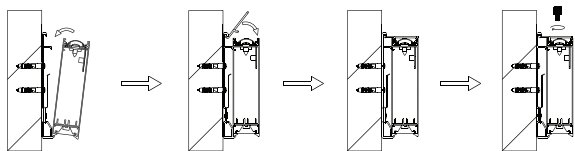
Connect L, N, GND, DIM+ and DIM-of AC Input wire to L, N, GND, DIM+ and DIM-respectively of AC wire.

4



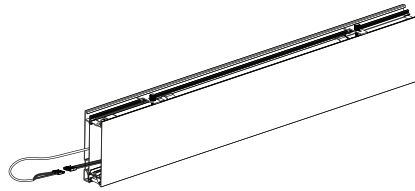
Remove the end caps at both ends.

5



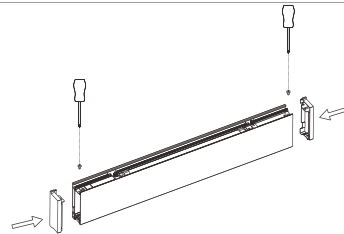
After tightening the lamp body onto the wall mounting bracket, use the fixing bracket to clamp the lamp body, and finally tighten the screw by hand.

6



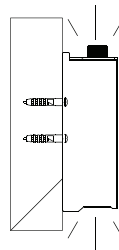
Connect the quick connector between the linear light and connector from the AC power wire. After then, put it into the linear body.

7



Reinstall the end cap

8



Complete installation and light up the lighting fixtures.